

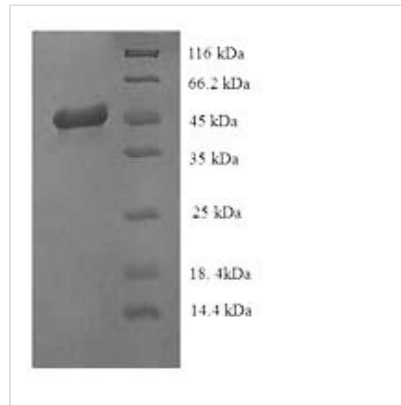


Recombinant Rotavirus A Intermediate capsid protein VP6

Product Code	CSB-YP542165ROH
Relevance	Intermediate capsid protein that self assembles to form an icosahedral capsid with a T=13 symmetry, which consists of 230 trimers of VP6, with channels at each of its five-fold vertices. This capsid constitutes the middle concentric layer of the viral mature particle. The innermost VP2 capsid and the intermediate VP6 capsid remain intact following cell entry to protect the dsRNA from degradation and to prevent unfavorable antiviral responses in the host cell during all the replication cycle of the virus. Nascent transcripts are transcribed within the structural confines of this double-layered particle (DLP) and are extruded through the channels at the five-fold axes. VP6 is required for the transcription activity of the DLP.
Abbreviation	Recombinant Rotavirus A Intermediate capsid protein VP6 protein
Storage	The shelf life is related to many factors, storage state, buffer ingredients, storage temperature and the stability of the protein itself. Generally, the shelf life of liquid form is 6 months at -20°C/-80°C. The shelf life of lyophilized form is 12 months at -20°C/-80°C.
Uniprot No.	B1NKU0
Product Type	Recombinant Protein
Immunogen Species	Rotavirus A (strain RVA/Human/United Kingdom/ST3/1975/G4P2A[6]) (RV-A) (Rotavirus A (strain St. Thomas 3))
Purity	≥ 90% as determined by SDS-PAGE.
Sequence	MEVLYSLSKTLKDARDKIVEGTLYSNVSDLIQQFNQMIVTMNGNDFQTGGIGNL PIRNWTFDFGLLGTLLNLDANYVETARTTIEYFIDFIDNVCMDEMARESQRNG VAPQSEALRKLKLAGIKFKRINFNSSEYIENWNLQNRRTGTFVFKPNIFPYS SFTLNRSQPMHDNLMGMTMWNLAGSEIQVAGFDYSCALNAPANIQQFEHIVQL RRALTTATITLLPDAERFSFPRVINSADGATTWFFNPIILRPNNVEVEFLLNGQII NTYQARFGTIIARNFDTIRLSFQLMRPPNMPAVNALFPQAQPFQHHATVGLTL RIESAVCESVLADANETLLANVTAVRQEYAIIPVGPVFPFGMNWTELITNYS EDNLQRVFTVASIRSMLIK
Source	Yeast
Protein Names	Recommended name: Intermediate capsid protein VP6
Expression Region	1-397aa
Notes	Repeated freezing and thawing is not recommended. Store working aliquots at 4°C for up to one week.
Tag Info	N-terminal 6xHis-tagged
Mol. Weight	46.9kDa
Protein Length	Full Length



Image



(Tris-Glycine gel) Discontinuous SDS-PAGE (reduced) with 5% enrichment gel and 15% separation gel.

Reconstitution

We recommend that this vial be briefly centrifuged prior to opening to bring the contents to the bottom. Please reconstitute protein in deionized sterile water to a concentration of 0.1-1.0 mg/mL. We recommend to add 5-50% of glycerol (final concentration) and aliquot for long-term storage at -20°C/-80°C. Our default final concentration of glycerol is 50%. Customers could use it as reference.

Shelf Life

The shelf life is related to many factors, storage state, buffer ingredients, storage temperature and the stability of the protein itself.

Generally, the shelf life of liquid form is 6 months at -20°C/-80°C. The shelf life of lyophilized form is 12 months at -20°C/-80°C.