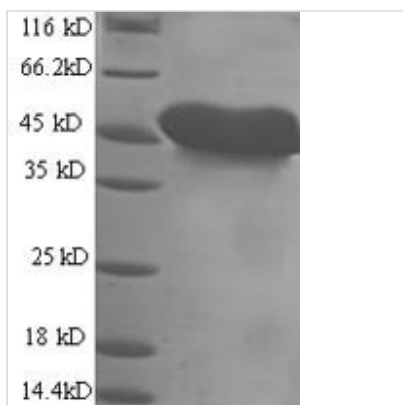




Recombinant Mouse Mesothelin (Msln), partial

Product Code	CSB-YP015044MO
Relevance	Mbrane-anchored forms may play a role in cellular adhesion.
Abbreviation	Recombinant Mouse Msln protein, partial
Storage	The shelf life is related to many factors, storage state, buffer ingredients, storage temperature and the stability of the protein itself. Generally, the shelf life of liquid form is 6 months at -20°C/-80°C. The shelf life of lyophilized form is 12 months at -20°C/-80°C.
Uniprot No.	Q61468
Alias	Pre-pro-megakaryocyte-potentiating factor
Product Type	Recombinant Protein
Immunogen Species	Mus musculus (Mouse)
Purity	≥ 90% as determined by SDS-PAGE.
Sequence	DAEQKACPPGKEPYKVDEDLIFYQNWELEACVDGTMLARQMDLVNEIPFTYE QLSIFKHKLDKTYPQGYPESLIQQLGHFFRYVSPEDIHQWNVTSPTVKTLLKV SKGQKMNAQAIALVACYLRGGGQLDEDMVKALGDIPLSYLCDFSPQDLHSVP SSVMWLVGPDLDKCSQRHLGLLYQKACSAFQNVSGLEYFEKIKTFLGGASV KDLRALSQHNVSMDIATFKRLQVDSLVLGSLVAEVQKLLGPNIVDLKTEEDKSPV RDWLFQRHQKDLRLGLGLQGGIPNGYLVLDNFVREAFS
Research Area	Others
Source	Yeast
Target Names	Msln
Protein Names	Recommended name: Mesothelin Alternative name(s): Pre-pro-megakaryocyte-potentiating factor Cleaved into the following 2 chains: 1. Megakaryocyte-potentiating factor Short name= 2. MPF 3. Mesothelin, cleaved form
Expression Region	298-600aa
Notes	Repeated freezing and thawing is not recommended. Store working aliquots at 4°C for up to one week.
Tag Info	N-terminal 6xHis-tagged
Mol. Weight	36.1kDa
Protein Length	Partial

Image



(Tris-Glycine gel) Discontinuous SDS-PAGE (reduced) with 5% enrichment gel and 15% separation gel.

Reconstitution

We recommend that this vial be briefly centrifuged prior to opening to bring the contents to the bottom. Please reconstitute protein in deionized sterile water to a concentration of 0.1-1.0 mg/mL. We recommend to add 5-50% of glycerol (final concentration) and aliquot for long-term storage at -20°C/-80°C. Our default final concentration of glycerol is 50%. Customers could use it as reference.

Shelf Life

The shelf life is related to many factors, storage state, buffer ingredients, storage temperature and the stability of the protein itself. Generally, the shelf life of liquid form is 6 months at -20°C/-80°C. The shelf life of lyophilized form is 12 months at -20°C/-80°C.