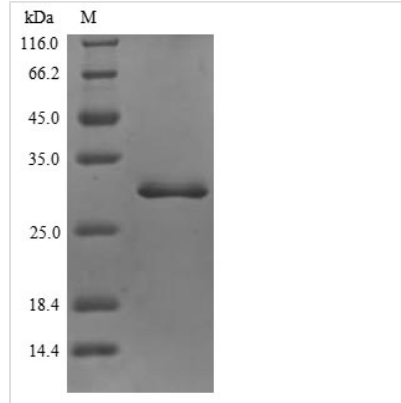


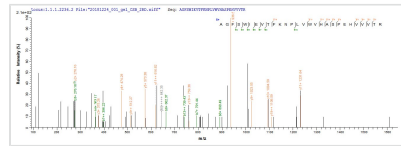


Recombinant Human Inter-alpha-trypsin inhibitor heavy chain H4 (ITIH4)?partial

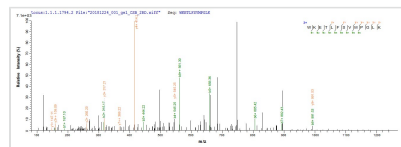
Product Code	CSB-YP617923HU
Relevance	Type II acute-phase protein (APP) involved in inflammatory responses to trauma. May also play a role in liver development or regeneration.
Abbreviation	Recombinant Human ITIH4 protein, partial
Storage	The shelf life is related to many factors, storage state, buffer ingredients, storage temperature and the stability of the protein itself. Generally, the shelf life of liquid form is 6 months at -20°C/-80°C. The shelf life of lyophilized form is 12 months at -20°C/-80°C.
Uniprot No.	Q14624
Storage Buffer	Tris-based buffer,50% glycerol
Product Type	Recombinant Proteins
Immunogen Species	Homo sapiens (Human)
Purity	≥ 90% as determined by SDS-PAGE. ≥ 90% as determined by SEC-HPLC.
Sequence	RLAILPASAPPATSNPDPVAVSRVMNMKIEETTMTTQTPAPIQAPSAILPLPGQSV ERLCVDPRHRQGPVNLLSDPEQGVVETGQYEREKAGFSWIEVTFKNPLVWVH ASPEHVVVTRNRRSSAYKWKETLFSVMPGLKMTMDKTGLLLLSDPKVTIGLL FWDGRGEGLRLLLLRDTDRFSSHVGGTLGQFYQEVLVWGSPAASDDGRRTLRLV QGNDHSATRERRLDYQEGPPGVEISCWSVEL
Research Area	others
Source	Yeast
Target Names	ITIH4
Protein Names	Inter-alpha-trypsin inhibitor family heavy chain-related protein
Expression Region	689-930aa
Notes	Repeated freezing and thawing is not recommended. Store working aliquots at 4°C for up to one week.
Tag Info	N-terminal 6xHis-tagged
Mol. Weight	28.9 kDa
Protein Length	Partial
Image	



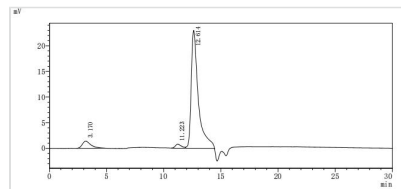
(Tris-Glycine gel) Discontinuous SDS-PAGE (reduced) with 5% enrichment gel and 15% separation gel.



Based on the SEQUEST from database of Yeast host and target protein, the LC-MS/MS Analysis result of CSB-YP617923HU could indicate that this peptide derived from Yeast-expressed Homo sapiens (Human) ITIH4.



Based on the SEQUEST from database of Yeast host and target protein, the LC-MS/MS Analysis result of CSB-YP617923HU could indicate that this peptide derived from Yeast-expressed Homo sapiens (Human) ITIH4.



The purity of ITIH4 was greater than 90% as determined by SEC-HPLC

Shelf Life

The shelf life is related to many factors, storage state, buffer ingredients, storage temperature and the stability of the protein itself.

Generally, the shelf life of liquid form is 6 months at -20°C/-80°C. The shelf life of lyophilized form is 12 months at -20°C/-80°C.