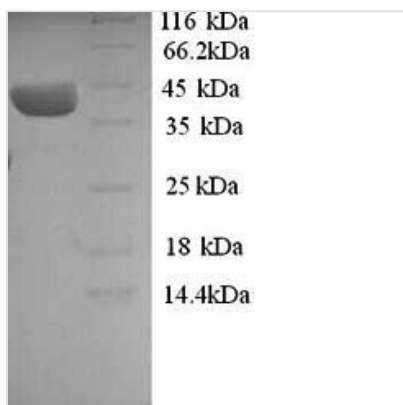




Recombinant Human ELAV-like protein 3 (ELAVL3)

Product Code	CSB-YP618895HU
Relevance	Binds to AU-rich sequences (AREs) of target mRNAs, including VEGF mRNA. May also bind poly-A tracts via RRM 3 . May be involved in neuronal differentiation and maintenance.1 Publication
Abbreviation	Recombinant Human ELAVL3 protein
Storage	The shelf life is related to many factors, storage state, buffer ingredients, storage temperature and the stability of the protein itself. Generally, the shelf life of liquid form is 6 months at -20°C/-80°C. The shelf life of lyophilized form is 12 months at -20°C/-80°C.
Uniprot No.	Q14576
Alias	Hu-antigen C ;HuCParaneoplastic cerebellar degeneration-associated antigen;Paraneoplastic limbic encephalitis antigen 21
Product Type	Recombinant Protein
Immunogen Species	Homo sapiens (Human)
Purity	Greater than 90% as determined by SDS-PAGE.
Sequence	MVTQILGAMESQVGGGPAGPALPNGPLLGTNGATDDSKTNLIVNYLPQNMTQ DEFKSLFGSIGDIESCKLVRDKITGQSLGYGFVNYSDPNDADKAINLNLGLKLQ TKTIKVSYPSSASIRDANLYVSGLPKTMSQKEMEQLFSQYGRITSRILVDQV TGVSRRGVGFIRFDKRIEAEAAIKGLNGQKPLGAAEPITVKFANNPSQKTGQALL THLYQSSARRYAGPLHHQTQRFRLDNLNLMAYGVKSPSLIARFSPIDGMS GLAGVGLSGGAAGAGWCIFVYNLSPEADESVLWQLFGPFGAVTNVVKVIRDFT TNKCKGFGFVTMTNYDEAAMAIAASLNGYRLGERVLQVSFKTSKQHKA
Research Area	Developmental Biology
Source	Yeast
Target Names	ELAVL3
Protein Names	Recommended name: ELAV-like protein 3 Alternative name(s): Hu-antigen C Short name= HuC Paraneoplastic cerebellar degeneration-associated antigen Paraneoplastic limbic encephalitis antigen 21
Expression Region	1-367aa
Notes	Repeated freezing and thawing is not recommended. Store working aliquots at 4°C for up to one week.
Tag Info	N-terminal 6xHis-tagged
Mol. Weight	41.5kDa
Protein Length	Full Length
Image	



(Tris-Glycine gel) Discontinuous SDS-PAGE (reduced) with 5% enrichment gel and 15% separation gel.

Reconstitution

We recommend that this vial be briefly centrifuged prior to opening to bring the contents to the bottom. Please reconstitute protein in deionized sterile water to a concentration of 0.1-1.0 mg/mL. We recommend to add 5-50% of glycerol (final concentration) and aliquot for long-term storage at -20°C/-80°C. Our default final concentration of glycerol is 50%. Customers could use it as reference.

Shelf Life

The shelf life is related to many factors, storage state, buffer ingredients, storage temperature and the stability of the protein itself. Generally, the shelf life of liquid form is 6 months at -20°C/-80°C. The shelf life of lyophilized form is 12 months at -20°C/-80°C.