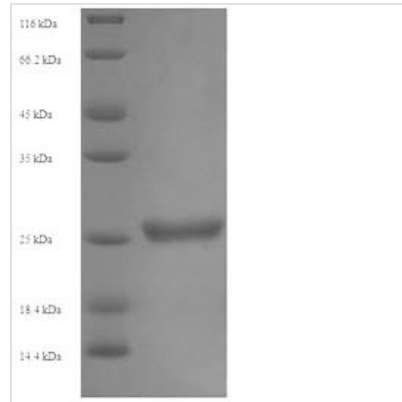




Recombinant Human Killer cell immunoglobulin-like receptor 2DS1 (KIR2DS1), partial

Product Code	CSB-YP623946HU
Relevance	Receptor on natural killer (NK) cells for HLA-C alleles. Does not inhibit the activity of NK cells.
Abbreviation	Recombinant Human KIR2DS1 protein, partial
Storage	The shelf life is related to many factors, storage state, buffer ingredients, storage temperature and the stability of the protein itself. Generally, the shelf life of liquid form is 6 months at -20°C/-80°C. The shelf life of lyophilized form is 12 months at -20°C/-80°C.
Uniprot No.	Q14954
Alias	CD158 antigen-like family member HMHC class I NK cell receptor Eb6 ActI; CD158h
Product Type	Recombinant Protein
Immunogen Species	Homo sapiens (Human)
Purity	Greater than 90% as determined by SDS-PAGE.
Sequence	HEGVHRKPSLLAHPGRLVKSEETVILQCWSDVMFEHFLFHREGMFNDTLRLIG EHHDGVSKANFSISRMRQDLAGTYRCYGSVTHSPYQLSAPSDPLDIVIIGLYEK PSLSAQPGPTVLAGENVTLSCSSRSSYDMYHLSREGEAHERRLPAGTKVNGT FQANFPLGPATHGGTYRCFGSFRDSPYEWKSSDPLLVSVTGNPSNSWPSP TEPSSETGNPRHLH
Research Area	Immunology
Source	Yeast
Target Names	KIR2DS1
Protein Names	Recommended name: Killer cell immunoglobulin-like receptor 2DS1 Alternative name(s): CD158 antigen-like family member H MHC class I NK cell receptor Eb6 ActI CD_antigen= CD158h
Expression Region	22-245aa
Notes	Repeated freezing and thawing is not recommended. Store working aliquots at 4°C for up to one week.
Tag Info	N-terminal 6xHis-tagged
Mol. Weight	26.8kDa
Protein Length	Extracellular Domain
Image	



(Tris-Glycine gel) Discontinuous SDS-PAGE (reduced) with 5% enrichment gel and 15% separation gel.

Reconstitution

We recommend that this vial be briefly centrifuged prior to opening to bring the contents to the bottom. Please reconstitute protein in deionized sterile water to a concentration of 0.1-1.0 mg/mL. We recommend to add 5-50% of glycerol (final concentration) and aliquot for long-term storage at -20°C/-80°C. Our default final concentration of glycerol is 50%. Customers could use it as reference.

Shelf Life

The shelf life is related to many factors, storage state, buffer ingredients, storage temperature and the stability of the protein itself. Generally, the shelf life of liquid form is 6 months at -20°C/-80°C. The shelf life of lyophilized form is 12 months at -20°C/-80°C.