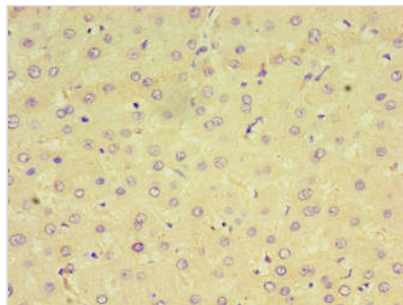




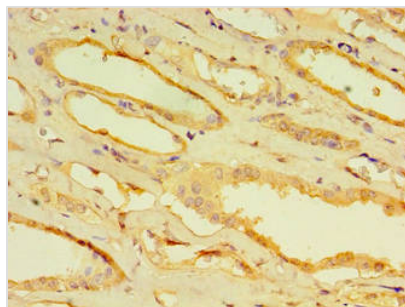
CPVL Antibody

Product Code	CSB-PA875664LA01HU
Storage	Upon receipt, store at -20°C or -80°C. Avoid repeated freeze.
Uniprot No.	Q9H3G5
Immunogen	Recombinant Human Probable serine carboxypeptidase CPVL protein (23-476AA)
Raised In	Rabbit
Species Reactivity	Human
Tested Applications	ELISA, IHC; Recommended dilution: IHC:1:20-1:200
Form	Liquid
Conjugate	Non-conjugated
Storage Buffer	Preservative: 0.03% Proclin 300 Constituents: 50% Glycerol, 0.01M PBS, PH 7.4
Purification Method	>95%, Protein G purified
Isotype	IgG
Clonality	Polyclonal
Alias	Probable serine carboxypeptidase CPVL (EC 3.4.16.-) (Carboxypeptidase, vitellogenic-like) (Vitellogenic carboxypeptidase-like protein) (VCP-like protein) (hVLP), CPVL, VLP
Immunogen Species	Homo sapiens (Human)
Research Area	Cell Biology
Target Names	CPVL

Image



Immunohistochemistry of paraffin-embedded human liver tissue using CSB-PA875664LA01HU at dilution of 1:100



Immunohistochemistry of paraffin-embedded human kidney tissue using CSB-PA875664LA01HU at dilution of 1:100