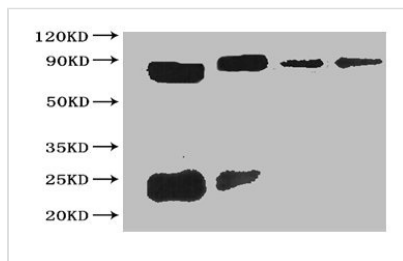




# Sumo tag Monoclonal Antibody

<b>Product Code</b>	CSB-MA000131M0m
<b>Storage</b>	Upon receipt, store at -20°C or -80°C. Avoid repeated freeze.
<b>Immunogen</b>	sumo tag protein
<b>Raised In</b>	mouse
<b>Species Reactivity</b>	N/A
<b>Tested Applications</b>	ELISA,WB;Recommended dilution:WB:1:500-1:5000
<b>Form</b>	liquid
<b>Conjugate</b>	Non-conjugated
<b>Storage Buffer</b>	Preservative: 0.03% Proclin 300 Constituents: 50% Glycerol, 0.01M PBS, PH 7.4
<b>Purification Method</b>	>95%,Protein G purified
<b>Isotype</b>	IgG1
<b>Clonality</b>	monoclonal
<b>Product Type</b>	Tag Control Antibody
<b>Clone No.</b>	20G12

## Image



All Lanes The cell supernatant hybridoma of Sumo tag

Lane 1 Sumo tagged fusion protein at 20ng

Lane 2 Sumo tagged fusion protein at 2ng

Lane 3 Sumo tagged fusion protein at 0.2ng

Lane 4 Sumo tagged fusion protein at 0.02ng

Secondary

Goat polyclonal to mouse IgG at 1/15000 dilution

Predicted band size : 50kd

Observed band size: 50kd

Additional bands at : 25 kd

## Usage

For Research Use Only. Not for use in diagnostic or therapeutic procedures.