



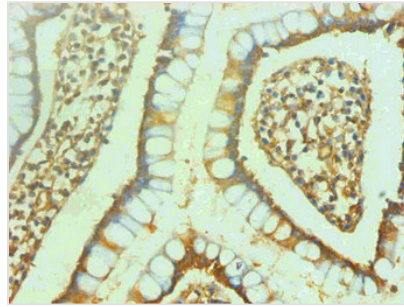
ENO2 Monoclonal Antibody

Product Code	CSB-MA0076721A0m
Storage	Upon receipt, store at -20°C or -80°C. Avoid repeated freeze.
Uniprot No.	P09104
Immunogen	Recombinant Human ENO2
Raised In	mouse
Species Reactivity	Human,Mouse
Specificity	specific for Human ENO2 denatured and native forms
Tested Applications	ELISA,WB,IHC;Recommended dilution:WB:1:500-1:5000,IHC:1:50-1:500
Relevance	Has neurotrophic and neuroprotective properties on a broad spectrum of central nervous system (CNS) neurons. Binds, in a calcium-dependent manner, to cultured neocortical neurons and promotes cell survival
Form	liquid
Conjugate	Non-conjugated
Storage Buffer	Preservative: 0.03% Proclin 300 Constituents: 50% Glycerol, 0.01M PBS, PH 7.4
Purification Method	>95%,protein G purified
Isotype	IgG2a
Clonality	monoclonal
Alias	2-phospho-D-glycerate hydro-lyase,Enolase 2,Neural enolase,Neuron-specific enolase,NSE,ENO2
Product Type	Monoclonal Antibody
Immunogen Species	Homo sapiens (Human)
Gene Names	ENO2
Accession NO.	4B1F5

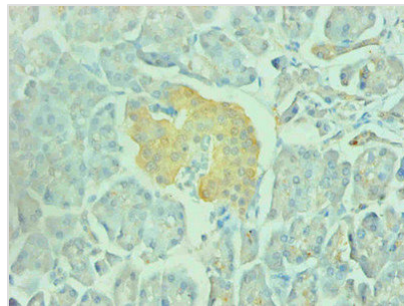
Image



All lanes: Mouse anti-human ENO2 monoclonal antibody at 1µg/ml
 Lane 1: Hela cell lysate
 Lane 2: Recombinant Human Gamma-enolase(ENO2) at 10µg
 Lane 3: U251 cell lysate
 Secondary Goat polyclonal to Mouse IgG at 1/3000 dilution
 Predicted band size : 43,48 kD
 Observed band size: 48 kD
 Additional bands at : 100kDa.



Immunohistochemical of paraffin-embedded human small intestine using CSB-MA0076721A0m at dilution of 1:200



Immunohistochemical of paraffin-embedded human pancreas using CSB-MA0076721A0m at dilution of 1:200