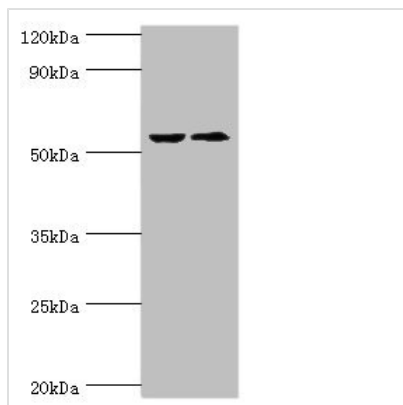




CASP8 Antibody

Product Code	CSB-PA18109A0Rb
Storage	Upon receipt, store at -20°C or -80°C. Avoid repeated freeze.
Uniprot No.	Q14790
Immunogen	Recombinant Human Caspase-8 protein (217-374AA)
Raised In	Rabbit
Species Reactivity	Human
Tested Applications	ELISA, WB, IHC, IF; Recommended dilution: WB:1:500-1:2000, IHC:1:10-1:100, IF:1:50-1:200
Form	Liquid
Conjugate	Non-conjugated
Storage Buffer	Preservative: 0.03% Proclin 300 Constituents: 50% Glycerol, 0.01M PBS, PH 7.4
Purification Method	>95%, Protein G purified
Isotype	IgG
Clonality	Polyclonal
Alias	Caspase-8 (CASP-8) (EC 3.4.22.61) (Apoptotic cysteine protease) (Apoptotic protease Mch-5) (CAP4) (FADD-homologous ICE/ced-3-like protease) (FADD-like ICE) (FLICE) (ICE-like apoptotic protease 5) (MORT1-associated ced-3 homolog) (MACH) [Cleaved into: Caspase-8 subunit p18; Caspase-8 subunit p10], CASP8, MCH5
Immunogen Species	Homo sapiens (Human)
Research Area	Cell Biology
Target Names	CASP8

Image



Western blot

All lanes: CASP8 antibody at 2µg/ml

Lane 1: ACCM whole cell lysate

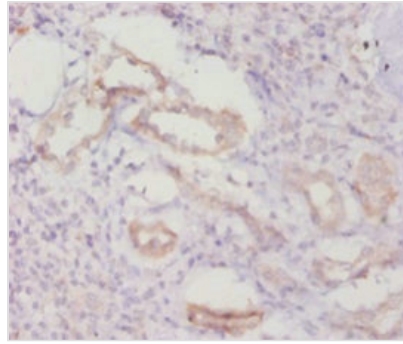
Lane 2: LO2 whole cell lysate

Secondary

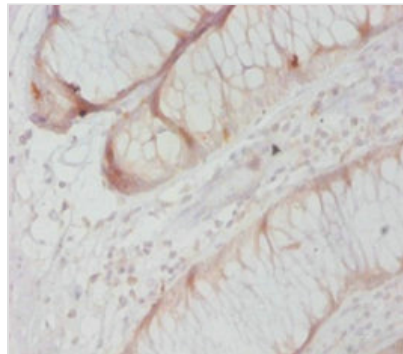
Goat polyclonal to rabbit IgG at 1/10000 dilution

Predicted band size: 56, 54, 46, 58, 28, 26, 33, 31, 62 kDa

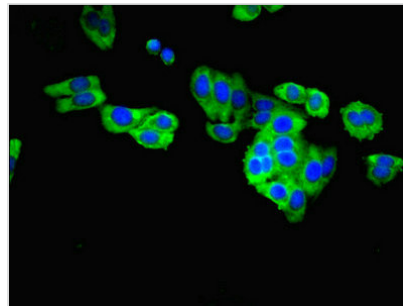
Observed band size: 56 kDa



Immunohistochemistry of paraffin-embedded human kidney tissue using CSB-PA18109A0Rb at dilution of 1:20



Immunohistochemistry of paraffin-embedded human colon cancer using CSB-PA18109A0Rb at dilution of 1:20



Immunofluorescent analysis of HepG2 cells using CSB-PA18109A0Rb at dilution of 1:100 and Alexa Fluor 488-conjugated AffiniPure Goat Anti-Rabbit IgG(H+L)

Usage

For Research Use Only. Not for use in diagnostic or therapeutic procedures.