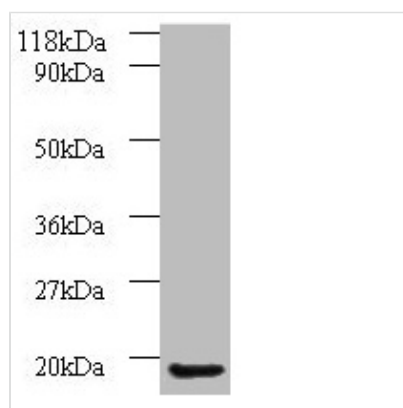




AP1S3 Antibody

Product Code	CSB-PA001868EA01HU
Storage	Upon receipt, store at -20°C or -80°C. Avoid repeated freeze.
Uniprot No.	Q96PC3
Immunogen	Recombinant Human AP-1 complex subunit sigma-3 protein (1-104AA)
Raised In	Rabbit
Species Reactivity	Human
Tested Applications	ELISA, WB; Recommended dilution: WB:1:1000-1:5000
Form	Liquid
Conjugate	Non-conjugated
Storage Buffer	Preservative: 0.03% Proclin 300 Constituents: 50% Glycerol, 0.01M PBS, PH 7.4
Purification Method	>95%, Protein G purified
Isotype	IgG
Clonality	Polyclonal
Alias	AP-1 complex subunit sigma-3 (Adaptor protein complex AP-1 subunit sigma-1C) (Adaptor-related protein complex 1 subunit sigma-1C) (Clathrin assembly protein complex 1 sigma-1C small chain) (Golgi adaptor HA1/AP1 adaptin sigma-1C subunit) (Sigma 1C subunit of AP-1 clathrin) (Sigma-adaptin 1C) (Sigma1C-adaptin), AP1S3
Immunogen Species	Homo sapiens (Human)
Research Area	Others
Target Names	AP1S3

Image



Western blot
 All lanes: AP1S3 antibody at 2µg/ml + A549 whole cell lysate
 Secondary
 Goat polyclonal to rabbit IgG at 1/10000 dilution
 Predicted band size: 19, 20, 13 kDa
 Observed band size: 19 kDa

Usage For Research Use Only. Not for use in diagnostic or therapeutic procedures.