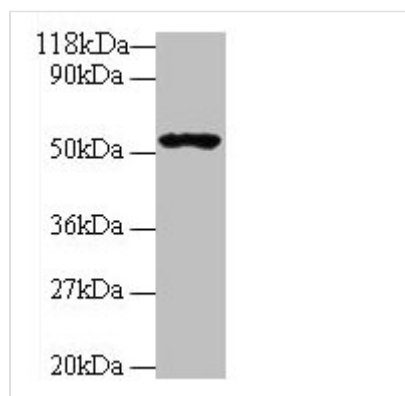




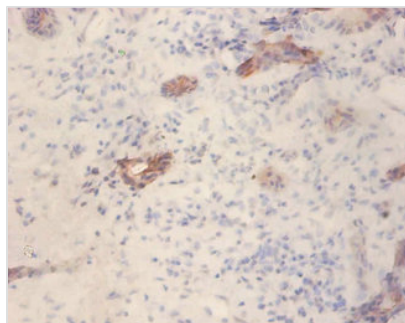
GLP1R Antibody

Product Code	CSB-PA009514LA01HU
Storage	Upon receipt, store at -20°C or -80°C. Avoid repeated freeze.
Uniprot No.	P43220
Immunogen	Recombinant Human Glucagon-like peptide 1 receptor protein (24-145AA)
Raised In	Rabbit
Species Reactivity	Human
Tested Applications	ELISA, WB, IHC, IF; Recommended dilution: WB:1:500-1:5000, IHC:1:20-1:200, IF:1:50-1:200
Form	Liquid
Conjugate	Non-conjugated
Storage Buffer	Preservative: 0.03% Proclin 300 Constituents: 50% Glycerol, 0.01M PBS, PH 7.4
Purification Method	>95%, Protein G purified
Isotype	IgG
Clonality	Polyclonal
Alias	Glucagon-like peptide 1 receptor (GLP-1 receptor) (GLP-1-R) (GLP-1R), GLP1R
Immunogen Species	Homo sapiens (Human)
Research Area	Neuroscience
Target Names	GLP1R

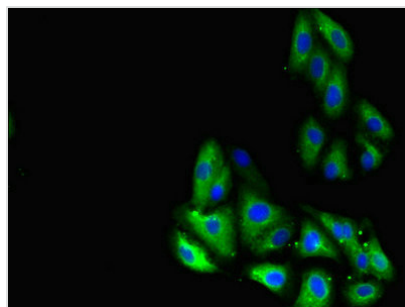
Image



Western blot
All lanes: GLP1R antibody at 2µg/ml + 293T whole cell lysate
Secondary
Goat polyclonal to rabbit IgG at 1/10000 dilution
Predicted band size: 54 kDa
Observed band size: 54 kDa



Immunohistochemistry of paraffin-embedded human pancreatic tissue using CSB-PA009514LA01HU at dilution of 1:100



Immunofluorescent analysis of HepG2 cells using CSB-PA009514LA01HU at dilution of 1:100 and Alexa Fluor 488-conjugated AffiniPure Goat Anti-Rabbit IgG(H+L)