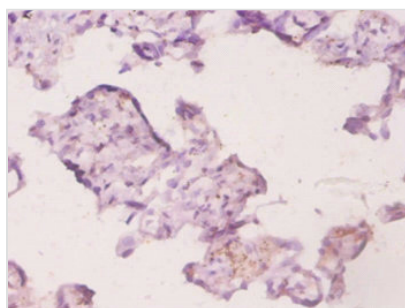




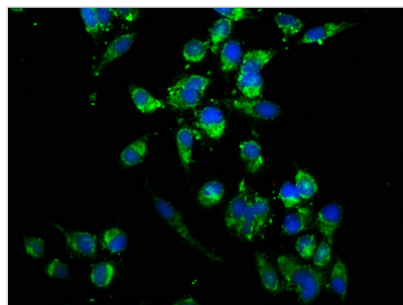
UBE2K Antibody

Product Code	CSB-PA09667A0Rb
Storage	Upon receipt, store at -20°C or -80°C. Avoid repeated freeze.
Uniprot No.	P61086
Immunogen	Recombinant Human Ubiquitin-conjugating enzyme E2 K protein (2-200AA)
Raised In	Rabbit
Species Reactivity	Human
Tested Applications	ELISA, IHC, IF; Recommended dilution: IHC:1:10-1:100, IF:1:50-1:200
Form	Liquid
Conjugate	Non-conjugated
Storage Buffer	Preservative: 0.03% Proclin 300 Constituents: 50% Glycerol, 0.01M PBS, PH 7.4
Purification Method	>95%, Protein G purified
Isotype	IgG
Clonality	Polyclonal
Alias	Ubiquitin-conjugating enzyme E2 K (EC 2.3.2.23) (E2 ubiquitin-conjugating enzyme K) (Huntingtin-interacting protein 2) (HIP-2) (Ubiquitin carrier protein) (Ubiquitin-conjugating enzyme E2-25 kDa) (Ubiquitin-conjugating enzyme E2(25K)) (Ubiquitin-conjugating enzyme E2-25K) (Ubiquitin-protein ligase), UBE2K, HIP2 LIG
Immunogen Species	Homo sapiens (Human)
Research Area	Neuroscience
Target Names	UBE2K

Image



Immunohistochemistry of paraffin-embedded human placenta tissue using CSB-PA09667A0Rb at dilution of 1:20



Immunofluorescence staining of HeLa cells with CSB-PA09667A0Rb at 1:166, counter-stained with DAPI. The cells were fixed in 4% formaldehyde, permeabilized using 0.2% Triton X-100 and blocked in 10% normal Goat Serum. The cells were then incubated with the antibody overnight at 4°C. The secondary antibody was Alexa Fluor 488-conjugated AffiniPure Goat Anti-Rabbit IgG(H+L).

Usage

For Research Use Only. Not for use in diagnostic or therapeutic procedures.