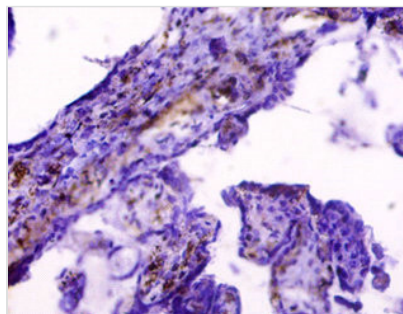




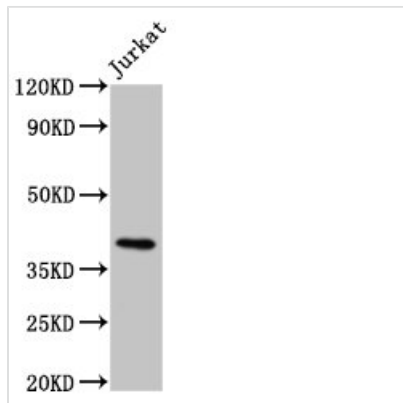
HLA-G Antibody

Product Code	CSB-PA02109A0Rb
Storage	Upon receipt, store at -20°C or -80°C. Avoid repeated freeze.
Uniprot No.	P17693
Immunogen	Recombinant Human HLA class I histocompatibility antigen, alpha chain G protein (25-337AA)
Raised In	Rabbit
Species Reactivity	Human
Tested Applications	ELISA, WB, IHC, IF; Recommended dilution: WB:1:500-1:5000, IHC:1:20-1:200, IF:1:50-1:200
Form	Liquid
Conjugate	Non-conjugated
Storage Buffer	Preservative: 0.03% Proclin 300 Constituents: 50% Glycerol, 0.01M PBS, PH 7.4
Purification Method	>95%, Protein G purified
Isotype	IgG
Clonality	Polyclonal
Alias	HLA class I histocompatibility antigen, alpha chain G (HLA G antigen) (MHC class I antigen G), HLA-G, HLA-6.0 HLAG
Immunogen Species	Homo sapiens (Human)
Research Area	Immunology
Target Names	HLA-G

Image



Immunohistochemistry of paraffin-embedded human placenta tissue using CSB-PA02109A0Rb at dilution of 1:50

**Western Blot**

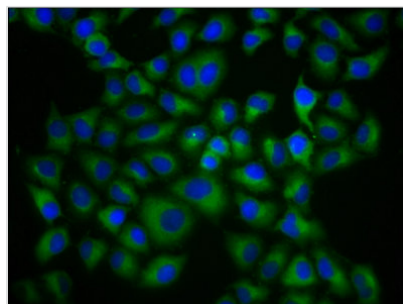
Positive WB detected in: Jurkat whole cell lysate

All lanes: HLA-G antibody at 8 μ g/ml**Secondary**

Goat polyclonal to rabbit IgG at 1/50000 dilution

Predicted band size: 39 kDa

Observed band size: 39 kDa



Immunofluorescence staining of HeLa cells with CSB-PA02109A0Rb at 1:133, counter-stained with DAPI. The cells were fixed in 4% formaldehyde, permeabilized using 0.2% Triton X-100 and blocked in 10% normal Goat Serum. The cells were then incubated with the antibody overnight at 4°C. The secondary antibody was Alexa Fluor 488-conjugated AffiniPure Goat Anti-Rabbit IgG(H+L).

Usage

For Research Use Only. Not for use in diagnostic or therapeutic procedures.