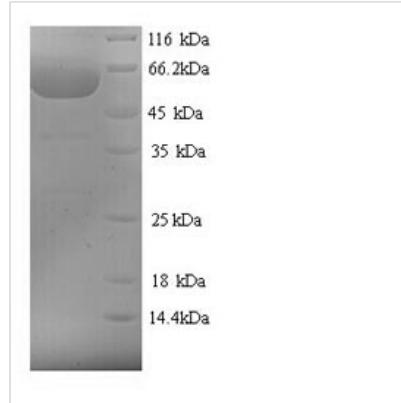




Recombinant Chamaecyparis obtusa Polygalacturonase

Product Code	CSB-YP752116CHAX
Abbreviation	Recombinant Chamaecyparis obtusa Polygalacturonase protein
Storage	The shelf life is related to many factors, storage state, buffer ingredients, storage temperature and the stability of the protein itself. Generally, the shelf life of liquid form is 6 months at -20°C/-80°C. The shelf life of lyophilized form is 12 months at -20°C/-80°C.
Uniprot No.	Q7M1E7
Product Type	Recombinant Protein
Immunogen Species	Chamaecyparis obtusa (Hinoki false-cypress)
Purity	Greater than 90% as determined by SDS-PAGE.
Sequence	SRHDAATVFNVEQYGAVGDGKHDSTEAFATTWNAACKKASAVLLVPANKKFF VNNLVFRGPCQPHLSFKVDGTIVAQPDPARWKNSKIWLQFAQLTDFNLMGTG VIDGQQQWWAGQCKVNGRTVCNDRNRPTAIKIDYSKSVTVKELTLMNSPE FHLVFGECEGVKIQGLKIKAPRDSPTDGDIFASKRFHIEKCVIGTGDDCIAIGT GSSNITIKDLICGPGHGISIGSLGRDNSRAEVSHVHVNRKAFIDTQNGLRIKTWQ GGSLASYITYENVEMINSENPIINQFYCTSASACQNQRSASAVQIQGVITYKNIH GTSATAAAIQLMCSDSVPCTGIQLSNVSLKLTSGKPASCVDKNARGFYSGRLIP TCKNLRPGPSPKEFELQQQPTTVM DENK GACAKGDSTCISLSSSPNCKNKC KGCQPCKPKLIIVHPNKPQDYYPQKWVCSCHNKIYNP
Research Area	Others
Source	Yeast
Protein Names	Recommended name: Polygalacturonase Short name= PG EC= 3.2.1.15 Alternative name(s): Major pollen allergen Cha o 2 Pectinase Allergen= Cha o 2
Expression Region	51-514aa
Notes	Repeated freezing and thawing is not recommended. Store working aliquots at 4°C for up to one week.
Tag Info	N-terminal 6xHis-tagged
Mol. Weight	52.5kDa
Protein Length	Full Length of Mature Protein
Image	



(Tris-Glycine gel) Discontinuous SDS-PAGE (reduced) with 5% enrichment gel and 15% separation gel.

Reconstitution

We recommend that this vial be briefly centrifuged prior to opening to bring the contents to the bottom. Please reconstitute protein in deionized sterile water to a concentration of 0.1-1.0 mg/mL. We recommend to add 5-50% of glycerol (final concentration) and aliquot for long-term storage at -20°C/-80°C. Our default final concentration of glycerol is 50%. Customers could use it as reference.

Shelf Life

The shelf life is related to many factors, storage state, buffer ingredients, storage temperature and the stability of the protein itself. Generally, the shelf life of liquid form is 6 months at -20°C/-80°C. The shelf life of lyophilized form is 12 months at -20°C/-80°C.