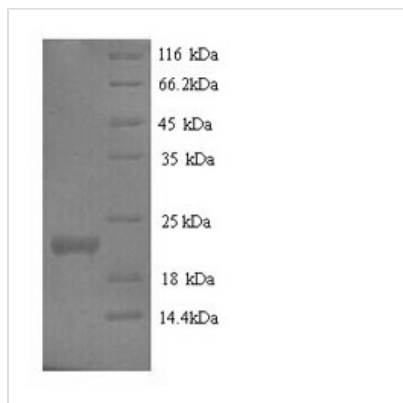




Recombinant Mouse Interferon epsilon (Ifne)

Product Code	CSB-YP800374MO
Relevance	Type I interferon required for maintaining basal levels of IFN-regulated genes, including 2'-5'-oligoadenylate synthetase, IRF7 and ISG15, in the female reproductive tract. Directly mediates protection against viral, including HSV-2, and bacterial, including Chlamydia muridarum, genital infections.
Abbreviation	Recombinant Mouse Ifne protein
Storage	The shelf life is related to many factors, storage state, buffer ingredients, storage temperature and the stability of the protein itself. Generally, the shelf life of liquid form is 6 months at -20°C/-80°C. The shelf life of lyophilized form is 12 months at -20°C/-80°C.
Uniprot No.	Q80ZF2
Alias	Interferon epsilon-1 Interferon tau-1
Product Type	Recombinant Protein
Immunogen Species	Mus musculus (Mouse)
Purity	≥ 90% as determined by SDS-PAGE.
Sequence	LEPKRIPFQLWMNRESLQLLKPLPSSSVQQCLAHRKNFLLPQQPVSPHQYQE GQVLAVVHEILQQIFTLLQTHGTMGIWEENHIEKVLAAALHRQLEYVESLGGLNA AQKSGGSSAQNLRLQIKAYFRRIHIDYLENQRYSSCAWIIVQTEIHRCMFFVFRF TTWLSRQDPDP
Research Area	Others
Source	Yeast
Target Names	Ifne
Protein Names	Recommended name: Interferon epsilon Short name= IFN-epsilon Alternative name(s): Interferon epsilon-1 Interferon tau-1
Expression Region	22-192aa
Notes	Repeated freezing and thawing is not recommended. Store working aliquots at 4°C for up to one week.
Tag Info	N-terminal 6xHis-tagged
Mol. Weight	22.0kDa
Protein Length	Full Length of Mature Protein

Image



(Tris-Glycine gel) Discontinuous SDS-PAGE (reduced) with 5% enrichment gel and 15% separation gel.

Reconstitution

We recommend that this vial be briefly centrifuged prior to opening to bring the contents to the bottom. Please reconstitute protein in deionized sterile water to a concentration of 0.1-1.0 mg/mL. We recommend to add 5-50% of glycerol (final concentration) and aliquot for long-term storage at $-20^{\circ}\text{C}/-80^{\circ}\text{C}$. Our default final concentration of glycerol is 50%. Customers could use it as reference.

Shelf Life

The shelf life is related to many factors, storage state, buffer ingredients, storage temperature and the stability of the protein itself. Generally, the shelf life of liquid form is 6 months at $-20^{\circ}\text{C}/-80^{\circ}\text{C}$. The shelf life of lyophilized form is 12 months at $-20^{\circ}\text{C}/-80^{\circ}\text{C}$.