

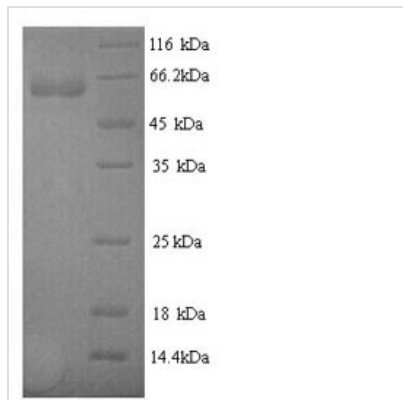


# Recombinant Human N-acetylmuramoyl-L-alanine amidase (PGLYRP2)

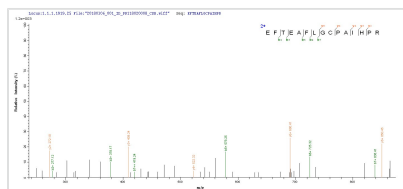
<b>Product Code</b>	CSB-YP846684HU
<b>Relevance</b>	May play a scavenger role by digesting biologically active peptidoglycan (PGN) into biologically inactive fragments. Has no direct bacteriolytic activity.
<b>Abbreviation</b>	Recombinant Human PGLYRP2 protein
<b>Storage</b>	The shelf life is related to many factors, storage state, buffer ingredients, storage temperature and the stability of the protein itself. Generally, the shelf life of liquid form is 6 months at -20°C/-80°C. The shelf life of lyophilized form is 12 months at -20°C/-80°C.
<b>Uniprot No.</b>	Q96PD5
<b>Alias</b>	Peptidoglycan recognition protein 2;Peptidoglycan recognition protein long ;PGRP-L
<b>Product Type</b>	Recombinant Protein
<b>Immunogen Species</b>	Homo sapiens (Human)
<b>Purity</b>	Greater than 90% as determined by SDS-PAGE.
<b>Sequence</b>	SLPLLMDSVIQALAELEQKVPAKTRHTASAWLMSAPNSGPHNRLYHFLLGAW SLNATELDPCPLSPELLGLTKEVARHVDVREGKEYGVVLAPDGGSTVAVEPLLAG LEAGLQGRRVINLPLDSMAAPWETGDTFPDVVAIAPDVRATSSPGLRDGSPDV TTADIGANTPDATKGCPDVQASLPDAKAKSPPTMVDSLLAVTLAGNLGLTFLR GSQTQSHPD LGTEGCWDQLSAPRTFTLLDPKASLLTMAFLNGALDGVILGDYL SRTPEPRPSLSHLLSQYYGAGVARDPGFRSNFRRQNGAALTSASILAQQVWG TLVLLQRLEPVHLQLQCMSQEQLAQAANATKEFTEAFLGCPAIHPRCRWGA APYRGRP KLLQLPLGFLYVHHTYVPAPPCTDFTRCAANMRSMQRYHQDTQG WGDIGYSFVVGSDGYVYEGRGWHWVGAHTLGHNSRFGVVAIVGNNTAALPT EALRTVRDTLPSCAVRAGLLRPDYALLGHRQLVRTDCPGDALFDLLRTWPHF TATVKPRPARSVSKRSRREPPPRTLPATDLQ
<b>Research Area</b>	Immunology
<b>Source</b>	Yeast
<b>Target Names</b>	PGLYRP2
<b>Protein Names</b>	Recommended name: N-acetylmuramoyl-L-alanine amidase EC= 3.5.1.28 Alternative name(s): Peptidoglycan recognition protein 2 Peptidoglycan recognition protein long Short name= PGRP-L
<b>Expression Region</b>	22-576aa
<b>Notes</b>	Repeated freezing and thawing is not recommended. Store working aliquots at 4°C for up to one week.
<b>Tag Info</b>	N-terminal 6xHis-tagged
<b>Mol. Weight</b>	62.0kDa


**Protein Length**

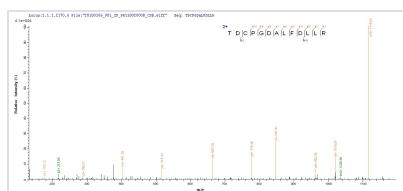
Full Length of Mature Protein

**Image**


(Tris-Glycine gel) Discontinuous SDS-PAGE (reduced) with 5% enrichment gel and 15% separation gel.



Based on the SEQUEST from database of Yeast host and target protein, the LC-MS/MS Analysis result of CSB-YP846684HU could indicate that this peptide derived from Yeast-expressed Homo sapiens (Human) PGLYRP2.



Based on the SEQUEST from database of Yeast host and target protein, the LC-MS/MS Analysis result of CSB-YP846684HU could indicate that this peptide derived from Yeast-expressed Homo sapiens (Human) PGLYRP2.

**Reconstitution**

We recommend that this vial be briefly centrifuged prior to opening to bring the contents to the bottom. Please reconstitute protein in deionized sterile water to a concentration of 0.1-1.0 mg/mL. We recommend to add 5-50% of glycerol (final concentration) and aliquot for long-term storage at -20°C/-80°C. Our default final concentration of glycerol is 50%. Customers could use it as reference.

**Shelf Life**

The shelf life is related to many factors, storage state, buffer ingredients, storage temperature and the stability of the protein itself. Generally, the shelf life of liquid form is 6 months at -20°C/-80°C. The shelf life of lyophilized form is 12 months at -20°C/-80°C.