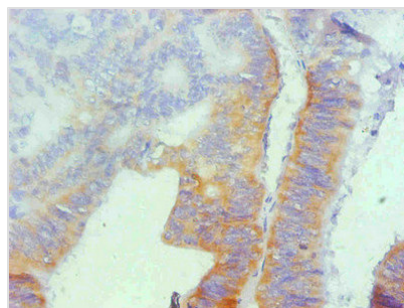




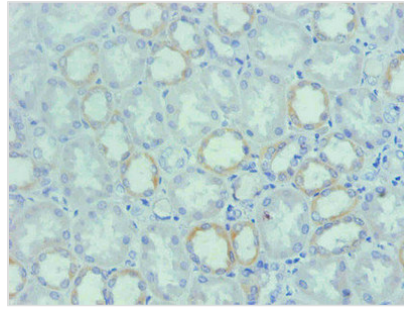
# SPP1 Monoclonal Antibody

<b>Product Code</b>	CSB-MA069021A0m
<b>Storage</b>	Upon receipt, store at -20°C or -80°C. Avoid repeated freeze.
<b>Uniprot No.</b>	P10451
<b>Immunogen</b>	Recombinant Human Osteopontin
<b>Raised In</b>	mouse
<b>Species Reactivity</b>	Human
<b>Tested Applications</b>	ELISA, WB, IHC; Recommended dilution: WB: 1:500-1:5000, IHC: 1:50-1:500
<b>Relevance</b>	Binds tightly to hydroxyapatite. Appears to form an integral part of the mineralized matrix. Probably important to cell-matrix interaction. Acts as a cytokine involved in enhancing production of interferon-gamma and interleukin-12 and reducing production of interleukin-10 and is essential in the pathway that leads to type I immunity
<b>Form</b>	liquid
<b>Conjugate</b>	Non-conjugated
<b>Storage Buffer</b>	Preservative: 0.03% Proclin 300 Constituents: 50% Glycerol, 0.01M PBS, PH 7.4
<b>Purification Method</b>	>95%, Protein G purified
<b>Isotype</b>	IgG2a
<b>Clonality</b>	monoclonal
<b>Product Type</b>	Monoclonal Antibody
<b>Immunogen Species</b>	Homo sapiens (Human)
<b>Clone No.</b>	1B2C2

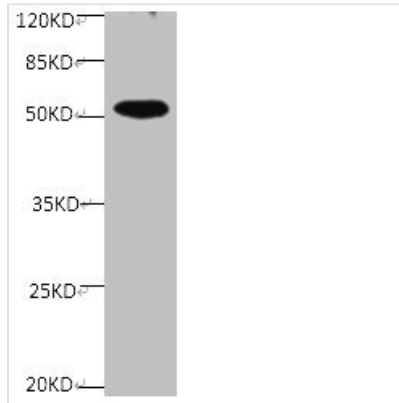
## Image



Immunohistochemical of paraffin-embedded human colon cancer using CSB-MA069021A0m at dilution of 1:200



Immunohistochemical of paraffin-embedded human Kidney tissue using CSB-MA069021A0m at dilution of 1:200



All Lanes Mouse anti human OPN monoclonal antibody at at 2 $\mu$ g/ml  
Lane 1: mouse kidney tissue lysate  
Secondary Goat polyclonal to Mouse IgG at 1/5000 dilution  
Predicted band size : 33,36,34kDa  
Observed band size: 50kDa

**Usage**

For Research Use Only. Not for use in diagnostic or therapeutic procedures.