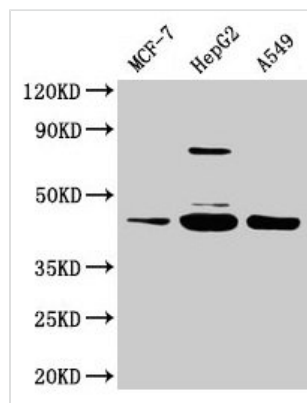




SERPINB1 Antibody

Product Code	CSB-PA021065LA01HU
Storage	Upon receipt, store at -20°C or -80°C. Avoid repeated freeze.
Uniprot No.	P30740
Immunogen	Recombinant Human Leukocyte elastase inhibitor protein (1-379AA)
Raised In	Rabbit
Species Reactivity	Human
Tested Applications	ELISA, WB, IP; Recommended dilution: WB:1:500-1:5000, IP:1:200-1:2000
Form	Liquid
Conjugate	Non-conjugated
Storage Buffer	Preservative: 0.03% Proclin 300 Constituents: 50% Glycerol, 0.01M PBS, PH 7.4
Purification Method	>95%, Protein G purified
Isotype	IgG
Clonality	Polyclonal
Alias	Leukocyte elastase inhibitor (LEI) (Monocyte/neutrophil elastase inhibitor) (EI) (M/NEI) (Peptidase inhibitor 2) (PI-2) (Serpine B1), SERPINB1, ELANH2 MNEI PI2
Immunogen Species	Homo sapiens (Human)
Research Area	Cardiovascular
Target Names	SERPINB1

Image



Western Blot

Positive WB detected in: MCF-7 whole cell lysate, HepG2 whole cell lysate, A549 whole cell lysate

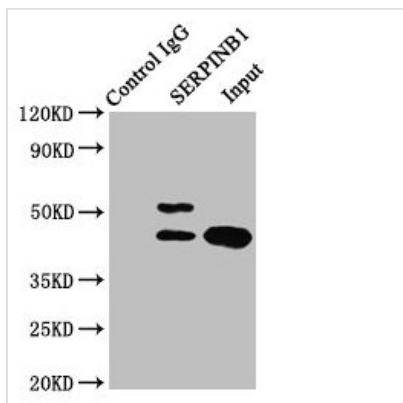
All lanes: SERPINB1 antibody at 2µg/ml

Secondary

Goat polyclonal to rabbit IgG at 1/50000 dilution

Predicted band size: 43, 27 kDa

Observed band size: 43 kDa



Immunoprecipitating SERPINB1 in HepG2 whole cell lysate

Lane 1: Rabbit control IgG instead of CSB-PA021065LA01HU in HepG2 whole cell lysate. For western blotting, a HRP-conjugated Protein G antibody was used as the secondary antibody (1/2000)

Lane 2: CSB-PA021065LA01HU (8 μ g) + HepG2 whole cell lysate (500 μ g)

Lane 3: HepG2 whole cell lysate (20 μ g)

Usage

For Research Use Only. Not for use in diagnostic or therapeutic procedures.