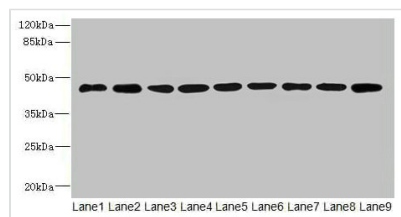




SH3GLB2 Antibody

Product Code	CSB-PA868296LA01HU
Storage	Upon receipt, store at -20°C or -80°C. Avoid repeated freeze.
Uniprot No.	Q9NR46
Immunogen	Recombinant Human Endophilin-B2 protein (1-395AA)
Raised In	Rabbit
Species Reactivity	Human, Mouse
Tested Applications	ELISA, WB, IHC; Recommended dilution: WB:1:1000-1:5000, IHC:1:20-1:200
Form	Liquid
Conjugate	Non-conjugated
Storage Buffer	Preservative: 0.03% Proclin 300 Constituents: 50% Glycerol, 0.01M PBS, PH 7.4
Purification Method	>95%, Protein G purified
Isotype	IgG
Clonality	Polyclonal
Alias	Endophilin-B2, SH3 domain-containing GRB2-like protein B2, SH3GLB2, KIAA1848, PP578
Immunogen Species	Homo sapiens (Human)
Research Area	Cell Biology
Target Names	SH3GLB2

Image



Western blot

All lanes: SH3GLB2 antibody at 1µg/ml

Lane 1: Hela whole cell lysate

Lane 2: Mouse gonadal tissue

Lane 3: Mouse lung tissue

Lane 4: U87 whole cell lysate

Lane 5: THP-1 whole cell lysate

Lane 6: A549 whole cell lysate

Lane 7: MCF-7 whole cell lysate

Lane 8: Mouse liver tissue

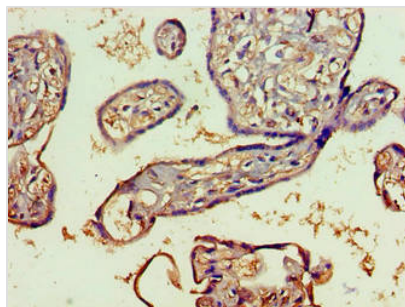
Lane 9: A431 whole cell lysate

Secondary

Goat polyclonal to rabbit IgG at 1/10000 dilution

Predicted band size: 44, 45 kDa

Observed band size: 44 kDa



Immunohistochemistry of paraffin-embedded human placenta tissue using CSB-PA868296LA01HU at dilution of 1:100

Usage

For Research Use Only. Not for use in diagnostic or therapeutic procedures.