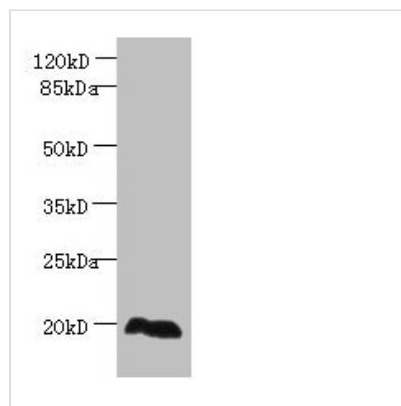




EEF1E1 Antibody

Product Code	CSB-PA007432LA01HU
Storage	Upon receipt, store at -20°C or -80°C. Avoid repeated freeze.
Uniprot No.	O43324
Immunogen	Recombinant Human Eukaryotic translation elongation factor 1 epsilon-1 protein (2-174AA)
Raised In	Rabbit
Species Reactivity	Human
Tested Applications	ELISA, WB, IHC, IF; Recommended dilution: WB:1:500-1:2000, IHC:1:20-1:200, IF:1:50-1:200
Form	Liquid
Conjugate	Non-conjugated
Storage Buffer	Preservative: 0.03% Proclin 300 Constituents: 50% Glycerol, 0.01M PBS, PH 7.4
Purification Method	>95%, Protein G purified
Isotype	IgG
Clonality	Polyclonal
Alias	Eukaryotic translation elongation factor 1 epsilon-1 (Aminoacyl tRNA synthetase complex-interacting multifunctional protein 3) (Elongation factor p18) (Multisynthase complex auxiliary component p18), EEF1E1, AIMP3 P18
Immunogen Species	Homo sapiens (Human)
Research Area	Cell Biology
Target Names	EEF1E1

Image



Western blot

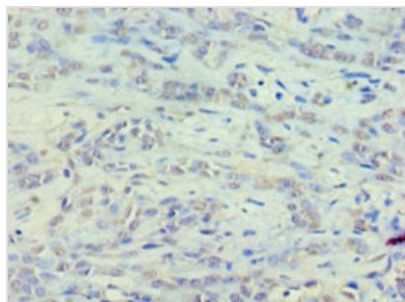
All lanes: EEF1E1 antibody at 2µg/ml + HepG2 whole cell lysate

Secondary

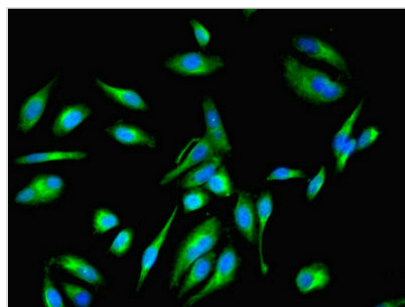
Goat polyclonal to rabbit IgG at 1/10000 dilution

Predicted band size: 20, 16 kDa

Observed band size: 20 kDa



Immunohistochemistry of paraffin-embedded human breast cancer using CSB-PA007432LA01HU at dilution of 1:100



Immunofluorescent analysis of HeLa cells using CSB-PA007432LA01HU at dilution of 1:100 and Alexa Fluor 488-conjugated AffiniPure Goat Anti-Rabbit IgG(H+L)

Usage

For Research Use Only. Not for use in diagnostic or therapeutic procedures.