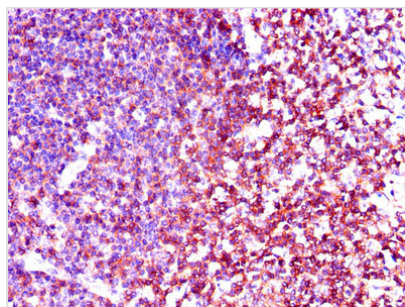




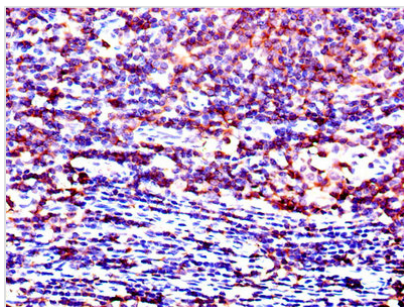
LCK Antibody

Product Code	CSB-PA012806LA01HU
Storage	Upon receipt, store at -20°C or -80°C. Avoid repeated freeze.
Uniprot No.	P06239
Immunogen	Recombinant Human Tyrosine-protein kinase Lck protein (1-539AA)
Raised In	Rabbit
Species Reactivity	Human
Tested Applications	ELISA, IHC, IF, IP; Recommended dilution: IHC:1:20-1:200, IF:1:50-1:200, IP:1:200-1:2000
Form	Liquid
Conjugate	Non-conjugated
Storage Buffer	Preservative: 0.03% Proclin 300 Constituents: 50% Glycerol, 0.01M PBS, PH 7.4
Purification Method	>95%, Protein G purified
Isotype	IgG
Clonality	Polyclonal
Alias	Tyrosine-protein kinase Lck (EC 2.7.10.2) (Leukocyte C-terminal Src kinase) (LSK) (Lymphocyte cell-specific protein-tyrosine kinase) (Protein YT16) (Proto-oncogene Lck) (T cell-specific protein-tyrosine kinase) (p56-LCK), LCK
Immunogen Species	Homo sapiens (Human)
Research Area	Immunology
Target Names	LCK

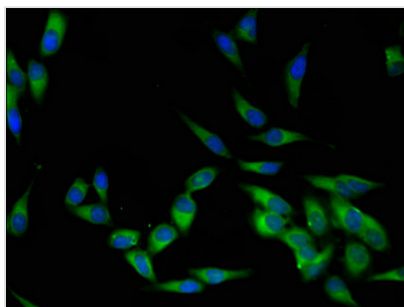
Image



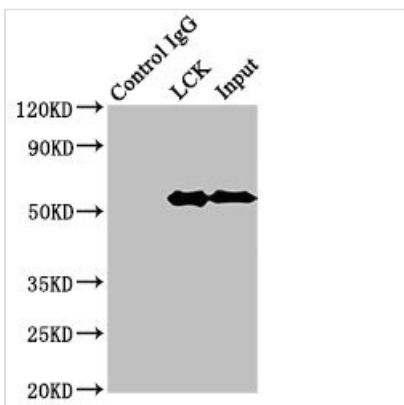
Immunohistochemistry of paraffin-embedded human tonsil tissue using CSB-PA012806LA01HU at dilution of 1:100



Immunohistochemistry of paraffin-embedded human lymph node tissue using CSB-PA012806LA01HU at dilution of 1:100



Immunofluorescent analysis of HeLa cells using CSB-PA012806LA01HU at dilution of 1:100 and Alexa Fluor 488-conjugated AffiniPure Goat Anti-Rabbit IgG(H+L)



Immunoprecipitating LCK in Jurkat whole cell lysate
 Lane 1: Rabbit control IgG (1 μ g) instead of CSB-PA012806LA01HU in Jurkat whole cell lysate. For western blotting, a HRP-conjugated Protein G antibody was used as the secondary antibody (1/2000)
 Lane 2: CSB-PA012806LA01HU (8 μ g) + Jurkat whole cell lysate (500 μ g)
 Lane 3: Jurkat whole cell lysate (10 μ g)

Usage

For Research Use Only. Not for use in diagnostic or therapeutic procedures.