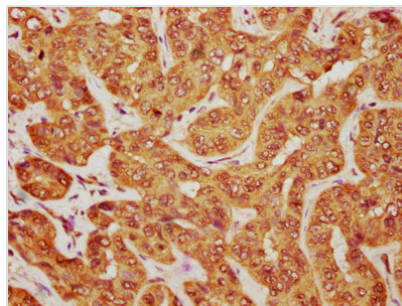




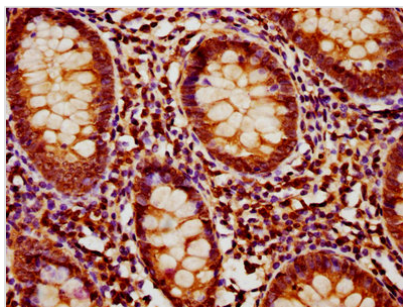
MOB1B Antibody

Product Code	CSB-PA762574HA01HU
Storage	Upon receipt, store at -20°C or -80°C. Avoid repeated freeze.
Uniprot No.	Q7L9L4
Immunogen	Recombinant Human MOB kinase activator 1B protein (2-216AA)
Raised In	Rabbit
Species Reactivity	Human
Tested Applications	ELISA, IHC, IF, IP; Recommended dilution: IHC:1:500-1:2000, IF:1:200-1:500, IP:1:200-1:2000
Form	Liquid
Conjugate	Non-conjugated
Storage Buffer	Preservative: 0.03% Proclin 300 Constituents: 50% Glycerol, 0.01M PBS, PH 7.4
Purification Method	>95%, Protein G purified
Isotype	IgG
Clonality	Polyclonal
Alias	MOB kinase activator 1B (Mob1 homolog 1A) (Mob1A) (Mob1B) (Mps one binder kinase activator-like 1A), MOB1B, MOB4A MOBKL1A
Immunogen Species	Homo sapiens (Human)
Research Area	Signal Transduction
Target Names	MOB1B

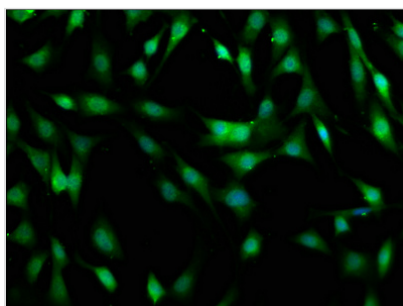
Image



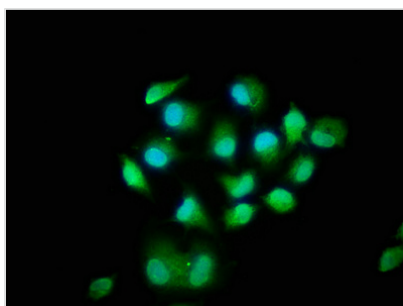
IHC image of CSB-PA762574HA01HU diluted at 1:1200 and staining in paraffin-embedded human liver cancer performed on a Leica BondTM system. After dewaxing and hydration, antigen retrieval was mediated by high pressure in a citrate buffer (pH 6.0). Section was blocked with 10% normal goat serum 30min at RT. Then primary antibody (1% BSA) was incubated at 4°C overnight. The primary is detected by a biotinylated secondary antibody and visualized using an HRP conjugated SP system.



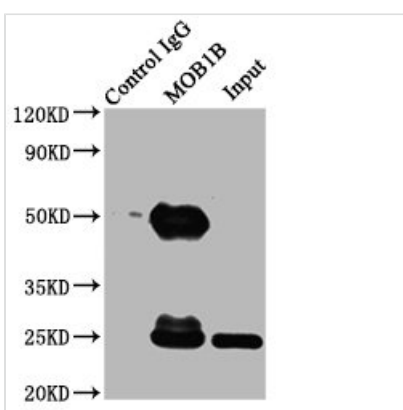
IHC image of CSB-PA762574HA01HU diluted at 1:1200 and staining in paraffin-embedded human appendix tissue performed on a Leica Bond™ system. After dewaxing and hydration, antigen retrieval was mediated by high pressure in a citrate buffer (pH 6.0). Section was blocked with 10% normal goat serum 30min at RT. Then primary antibody (1% BSA) was incubated at 4°C overnight. The primary is detected by a biotinylated secondary antibody and visualized using an HRP conjugated SP system.



Immunofluorescence staining of NIH/3T3 cells with CSB-PA762574HA01HU at 1:400, counter-stained with DAPI. The cells were fixed in 4% formaldehyde, permeabilized using 0.2% Triton X-100 and blocked in 10% normal Goat Serum. The cells were then incubated with the antibody overnight at 4°C. The secondary antibody was Alexa Fluor 488-conjugated AffiniPure Goat Anti-Rabbit IgG(H+L).



Immunofluorescence staining of Hela cells with CSB-PA762574HA01HU at 1:400, counter-stained with DAPI. The cells were fixed in 4% formaldehyde, permeabilized using 0.2% Triton X-100 and blocked in 10% normal Goat Serum. The cells were then incubated with the antibody overnight at 4°C. The secondary antibody was Alexa Fluor 488-conjugated AffiniPure Goat Anti-Rabbit IgG(H+L).



Immunoprecipitating MOB1B in K562 whole cell lysate
 Lane 1: Rabbit control IgG (1µg) instead of CSB-PA762574HA01HU in K562 whole cell lysate.
 For western blotting, a HRP-conjugated Protein G antibody was used as the secondary antibody (1/2000)
 Lane 2: CSB-PA762574HA01HU (6µg) + K562 whole cell lysate (500µg)
 Lane 3: K562 whole cell lysate (10µg)

Usage

For Research Use Only. Not for use in diagnostic or therapeutic procedures.