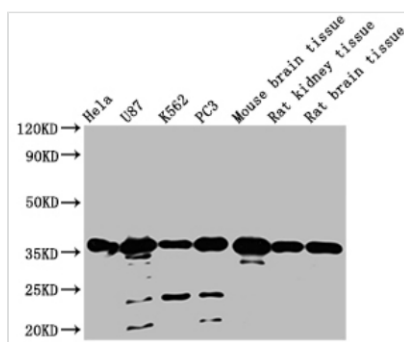




METRNL Antibody

Product Code	CSB-PA731035LA01HU
Storage	Upon receipt, store at -20°C or -80°C. Avoid repeated freeze.
Uniprot No.	Q641Q3
Immunogen	Recombinant Human Meteorin-like protein
Raised In	Rabbit
Species Reactivity	Human, Mouse, Rat
Tested Applications	ELISA, WB; Recommended dilution: WB:1:500-1:5000
Form	Liquid
Conjugate	Non-conjugated
Storage Buffer	Liquid in PBS containing 50% glycerol, 0.5% BSA and 0.02% sodium azide.
Purification Method	Antigen Affinity purified
Isotype	IgG
Clonality	Polyclonal
Product Type	Polyclonal Antibody
Immunogen Species	Homo sapiens (Human)
Research Area	Others
Target Names	METRNL

Image



Western Blot

Positive WB detected in: HeLa whole cell lysate, U87 whole cell lysate, K562 whole cell lysate, PC3 whole cell lysate, Mouse brain tissue, Rat kidney tissue, Rat brain tissue

All lanes: METRNL antibody at 1:2000

Secondary

Goat polyclonal to rabbit IgG at 1/50000 dilution

Predicted band size: 35, 26 KDa

Observed band size: 35 KDa

Exposure time?1min

Usage

For Research Use Only. Not for use in diagnostic or therapeutic procedures.