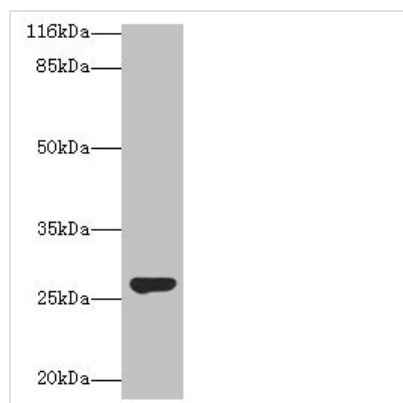




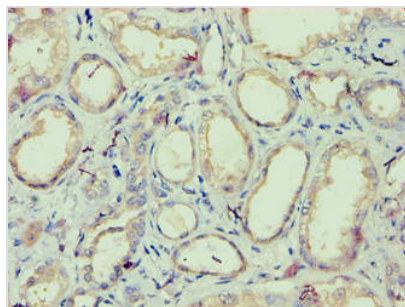
IZUMO4 Antibody

Product Code	CSB-PA636327LA01HU
Storage	Upon receipt, store at -20°C or -80°C. Avoid repeated freeze.
Uniprot No.	Q1ZYL8
Immunogen	Recombinant Human Izumo sperm-egg fusion protein 4 protein (16-214AA)
Raised In	Rabbit
Species Reactivity	Human, Rat
Tested Applications	ELISA, WB, IHC, IF; Recommended dilution: WB:1:500-1:5000, IHC:1:20-1:200, IF:1:50-1:200
Form	Liquid
Conjugate	Non-conjugated
Storage Buffer	Preservative: 0.03% Proclin 300 Constituents: 50% Glycerol, 0.01M PBS, PH 7.4
Purification Method	>95%, Protein G purified
Isotype	IgG
Clonality	Polyclonal
Alias	Izumo sperm-egg fusion protein 4 (Sperm 22 kDa protein c113), IZUMO4, C19orf36
Immunogen Species	Homo sapiens (Human)
Research Area	Developmental Biology
Target Names	IZUMO4

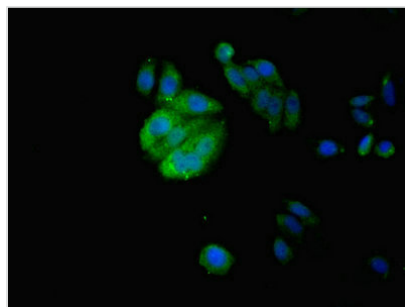
Image



Western blot
 All lanes: IZUMO4 antibody at 2µg/ml + Rat gonadal tissue
 Secondary
 Goat polyclonal to rabbit IgG at 1/10000 dilution
 Predicted band size: 27, 25, 18, 19 kDa
 Observed band size: 27 kDa



Immunohistochemistry of paraffin-embedded human kidney tissue using CSB-PA636327LA01HU at dilution of 1:100



Immunofluorescent analysis of HepG2 cells using CSB-PA636327LA01HU at dilution of 1:100 and Alexa Fluor 488-conjugated AffiniPure Goat Anti-Rabbit IgG(H+L)

Usage

For Research Use Only. Not for use in diagnostic or therapeutic procedures.