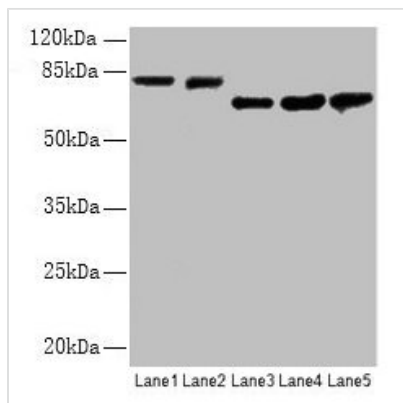




APP Antibody

Product Code	CSB-PA07179A0Rb
Storage	Upon receipt, store at -20°C or -80°C. Avoid repeated freeze.
Uniprot No.	P05067
Immunogen	Recombinant Human Amyloid-beta A4 protein (18-270AA)
Raised In	Rabbit
Species Reactivity	Human, Mouse
Tested Applications	ELISA, WB, IHC, IF; Recommended dilution: WB:1:1000-1:5000, IHC:1:20-1:200, IF:1:50-1:200
Form	Liquid
Conjugate	Non-conjugated
Storage Buffer	Preservative: 0.03% Proclin 300 Constituents: 50% Glycerol, 0.01M PBS, PH 7.4
Purification Method	>95%, Protein G purified
Isotype	IgG
Clonality	Polyclonal
Alias	Amyloid-beta A4 protein (ABPP) (APPI) (APP) (Alzheimer disease amyloid protein) (Amyloid precursor protein) (Amyloid-beta precursor protein) (Cerebral vascular amyloid peptide) (CVAP) (PreA4) (Protease nexin-II) (PN-II) [Cleaved into: N-APP; Soluble APP-alpha (S-APP-alpha); Soluble APP-beta (S-APP-beta); C99 (Beta-secretase C-terminal fragment) (Beta-CTF); Amyloid-beta protein 42 (Abeta42) (Beta-APP42); Amyloid-beta protein 40 (Abeta40) (Beta-APP40); C83 (Alpha-secretase C-terminal fragment) (Alpha-CTF); P3(42); P3(40); C80; Gamma-secretase C-terminal fragment 59 (Amyloid intracellular domain 59) (AICD-59) (AID(59)) (Gamma-CTF(59)); Gamma-secretase C-terminal fragment 57 (Amyloid intracellular domain 57) (AICD-57) (AID(57)) (Gamma-CTF(57)); Gamma-secretase C-terminal fragment 50 (Amyloid intracellular domain 50) (AICD-50) (AID(50)) (Gamma-CTF(50)); C31], APP, A4 AD1
Immunogen Species	Homo sapiens (Human)
Research Area	Neuroscience
Target Names	APP
Image	



Western blot

All lanes: APP antibody at 2.4µg/ml

Lane 1: Mouse brain tissue

Lane 2: 293 whole cell lysate

Lane 3: A549 whole cell lysate

Lane 4: U251 whole cell lysate

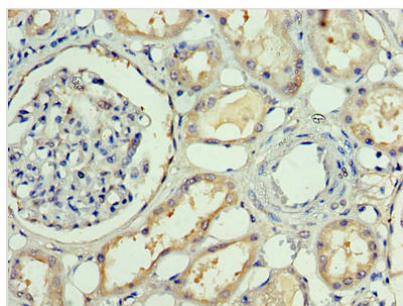
Lane 5: SH-SY5Y whole cell lysate

Secondary

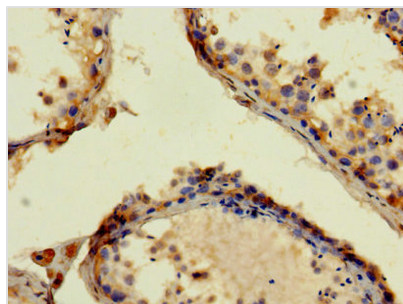
Goat polyclonal to rabbit IgG at 1/15000 dilution

Predicted band size: 87, 35, 77, 79, 81, 83, 85, 86, 73 kDa

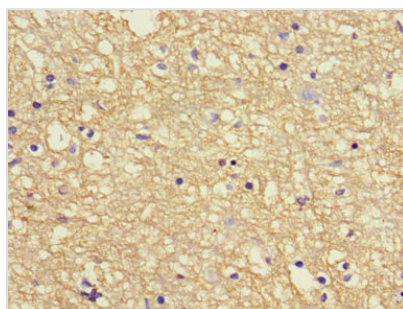
Observed band size: 81, 73 kDa



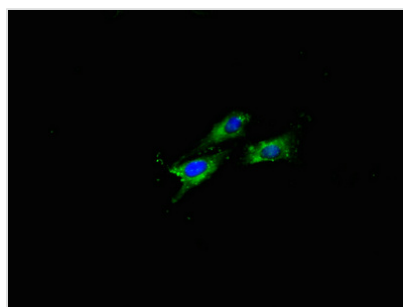
Immunohistochemistry of paraffin-embedded human kidney tissue using CSB-PA07179A0Rb at dilution of 1:100



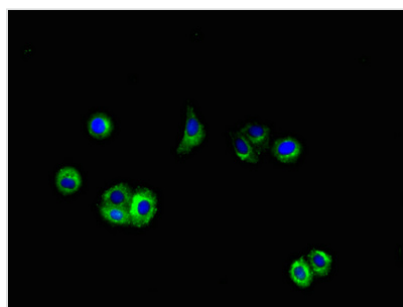
Immunohistochemistry of paraffin-embedded human testis tissue using CSB-PA07179A0Rb at dilution of 1:100



Immunohistochemistry of paraffin-embedded human brain tissue using CSB-PA07179A0Rb at dilution of 1:100



Immunofluorescent analysis of HeLa cells using CSB-PA07179A0Rb at dilution of 1:100 and Alexa Fluor 488-conjugated AffiniPure Goat Anti-Rabbit IgG(H+L)



Immunofluorescent analysis of HepG2 cells using CSB-PA07179A0Rb at dilution of 1:100 and Alexa Fluor 488-conjugated AffiniPure Goat Anti-Rabbit IgG(H+L)

Usage

For Research Use Only. Not for use in diagnostic or therapeutic procedures.