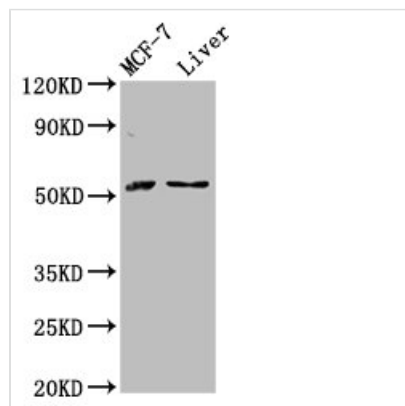




AKT2 Antibody

| | |
|----------------------------|--|
| Product Code | CSB-PA15919A0Rb |
| Storage | Upon receipt, store at -20°C or -80°C. Avoid repeated freeze. |
| Uniprot No. | P31751 |
| Immunogen | Recombinant Human RAC-beta serine/threonine-protein kinase protein (2-481AA) |
| Raised In | Rabbit |
| Species Reactivity | Human, Rat |
| Tested Applications | ELISA, WB, IHC, IF; Recommended dilution: WB:1:500-1:5000, IHC:1:20-1:200, IF:1:200-1:500 |
| Form | Liquid |
| Conjugate | Non-conjugated |
| Storage Buffer | Preservative: 0.03% Proclin 300 Constituents: 50% Glycerol, 0.01M PBS, PH 7.4 |
| Purification Method | >95%, Protein G purified |
| Isotype | IgG |
| Clonality | Polyclonal |
| Alias | RAC-beta serine/threonine-protein kinase (EC 2.7.11.1) (Protein kinase Akt-2) (Protein kinase B beta) (PKB beta) (RAC-PK-beta), AKT2 |
| Immunogen Species | Homo sapiens (Human) |
| Research Area | Signal Transduction |
| Target Names | AKT2 |

Image



Western Blot

Positive WB detected in: MCF-7 whole cell lysate, Rat liver tissue

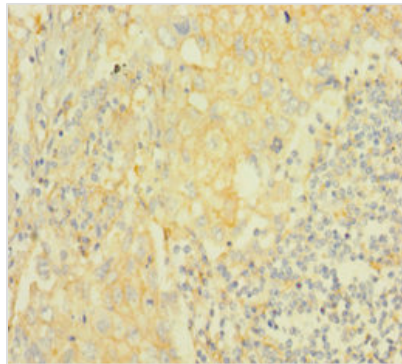
All lanes: AKT2 antibody at 2.8µg/ml

Secondary

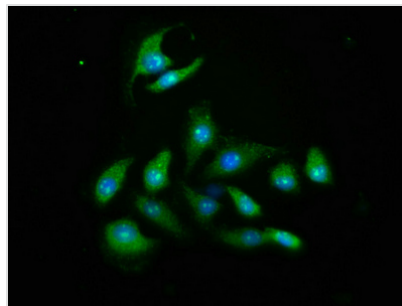
Goat polyclonal to rabbit IgG at 1/50000 dilution

Predicted band size: 56, 52 kDa

Observed band size: 56 kDa



Immunohistochemistry of paraffin-embedded human lung cancer using CSB-PA15919A0Rb at dilution of 1:100



Immunofluorescence staining of A549 cells with CSB-PA15919A0Rb at 1:466, counter-stained with DAPI. The cells were fixed in 4% formaldehyde, permeabilized using 0.2% Triton X-100 and blocked in 10% normal Goat Serum. The cells were then incubated with the antibody overnight at 4°C. The secondary antibody was Alexa Fluor 488-conjugated AffiniPure Goat Anti-Rabbit IgG(H+L).