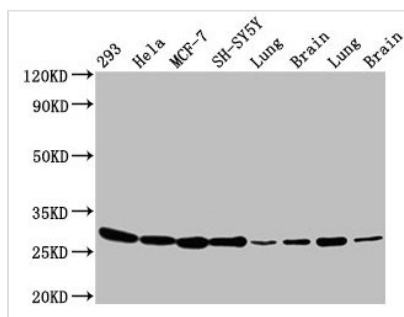




BCAP31 Antibody

Product Code	CSB-PA03425A0Rb
Storage	Upon receipt, store at -20°C or -80°C. Avoid repeated freeze.
Uniprot No.	P51572
Immunogen	Recombinant Human B-cell receptor-associated protein 31 protein (2-243AA)
Raised In	Rabbit
Species Reactivity	Human, Mouse, Rat
Tested Applications	ELISA, WB, IHC, IF, IP; Recommended dilution: WB:1:1000-1:5000, IHC:1:1000-1:2000, IF:1:200-1:500, IP:1:200-1:2000
Form	Liquid
Conjugate	Non-conjugated
Storage Buffer	Preservative: 0.03% Proclin 300 Constituents: 50% Glycerol, 0.01M PBS, PH 7.4
Purification Method	>95%, Protein G purified
Isotype	IgG
Clonality	Polyclonal
Alias	B-cell receptor-associated protein 31 (BCR-associated protein 31) (Bap31) (6C6-AG tumor-associated antigen) (Protein CDM) (p28), BCAP31, BAP31 DXS1357E
Immunogen Species	Homo sapiens (Human)
Research Area	Cell Biology
Target Names	BCAP31

Image



Western Blot

Positive WB detected in: 293 whole cell lysate, HeLa whole cell lysate, MCF-7 whole cell lysate, SH-SY5Y whole cell lysate, Rat lung tissue, Rat brain tissue, Mouse lung tissue, Mouse brain tissue

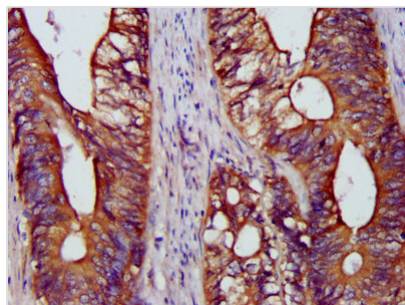
All lanes: BCAP31 antibody at 4.8µg/ml

Secondary

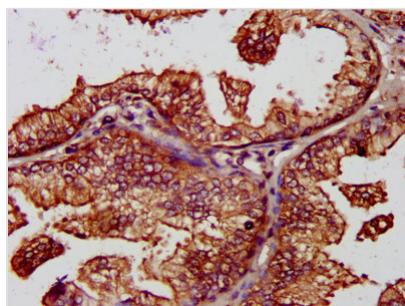
Goat polyclonal to rabbit IgG at 1/50000 dilution

Predicted band size: 28, 35 kDa

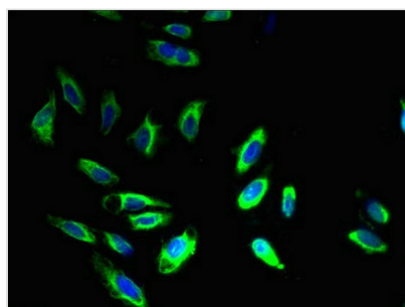
Observed band size: 28 kDa



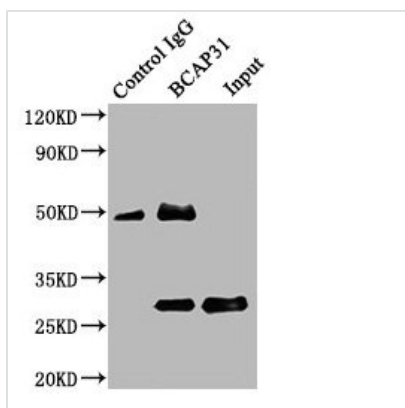
IHC image of CSB-PA03425A0Rb diluted at 1:1200 and staining in paraffin-embedded human colon cancer performed on a Leica Bond™ system. After dewaxing and hydration, antigen retrieval was mediated by high pressure in a citrate buffer (pH 6.0). Section was blocked with 10% normal goat serum 30min at RT. Then primary antibody (1% BSA) was incubated at 4°C overnight. The primary is detected by a biotinylated secondary antibody and visualized using an HRP conjugated SP system.



IHC image of CSB-PA03425A0Rb diluted at 1:1200 and staining in paraffin-embedded human prostate cancer performed on a Leica Bond™ system. After dewaxing and hydration, antigen retrieval was mediated by high pressure in a citrate buffer (pH 6.0). Section was blocked with 10% normal goat serum 30min at RT. Then primary antibody (1% BSA) was incubated at 4°C overnight. The primary is detected by a biotinylated secondary antibody and visualized using an HRP conjugated SP system.



Immunofluorescence staining of HeLa cells with CSB-PA03425A0Rb at 1:400, counter-stained with DAPI. The cells were fixed in 4% formaldehyde, permeabilized using 0.2% Triton X-100 and blocked in 10% normal Goat Serum. The cells were then incubated with the antibody overnight at 4°C. The secondary antibody was Alexa Fluor 488-conjugated AffiniPure Goat Anti-Rabbit IgG(H+L).



Immunoprecipitating BCAP31 in Mouse liver tissue
 Lane 1: Rabbit control IgG (1µg) instead of CSB-PA03425A0Rb in Mouse liver tissue. For western blotting, a HRP-conjugated Protein G antibody was used as the secondary antibody (1/2000)
 Lane 2: CSB-PA03425A0Rb (6µg) + Mouse liver tissue (500µg)
 Lane 3: Mouse liver tissue (10µg)

Usage

For Research Use Only. Not for use in diagnostic or therapeutic procedures.