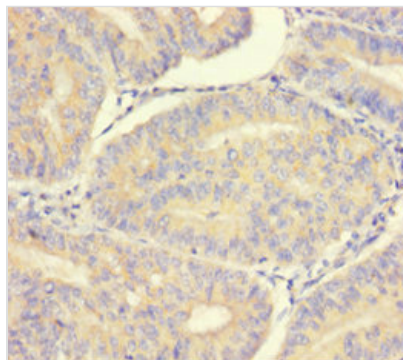




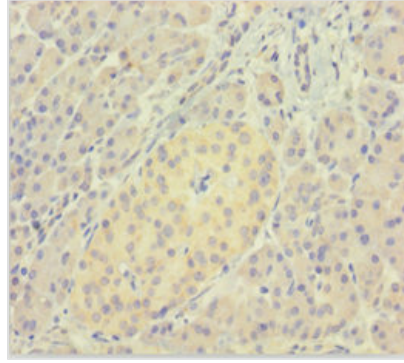
LMAN1L Antibody

Product Code	CSB-PA862055LA01HU
Storage	Upon receipt, store at -20°C or -80°C. Avoid repeated freeze.
Uniprot No.	Q9HAT1
Immunogen	Recombinant Human Protein ERGIC-53-like protein (26-462AA)
Raised In	Rabbit
Species Reactivity	Human
Tested Applications	ELISA, IHC; Recommended dilution: IHC:1:20-1:200
Form	Liquid
Conjugate	Non-conjugated
Storage Buffer	Preservative: 0.03% Proclin 300 Constituents: 50% Glycerol, 0.01M PBS, PH 7.4
Purification Method	>95%, Protein G purified
Isotype	IgG
Clonality	Polyclonal
Alias	Protein ERGIC-53-like (ERGIC53-like protein) (Lectin mannose-binding 1-like) (LMAN1-like protein), LMAN1L, ERGL
Immunogen Species	Homo sapiens (Human)
Research Area	Signal Transduction
Target Names	LMAN1L

Image



Immunohistochemistry of paraffin-embedded human endometrial cancer using CSB-PA862055LA01HU at dilution of 1:100



Immunohistochemistry of paraffin-embedded human pancreatic tissue using CSB-PA862055LA01HU at dilution of 1:100

Usage

For Research Use Only. Not for use in diagnostic or therapeutic procedures.