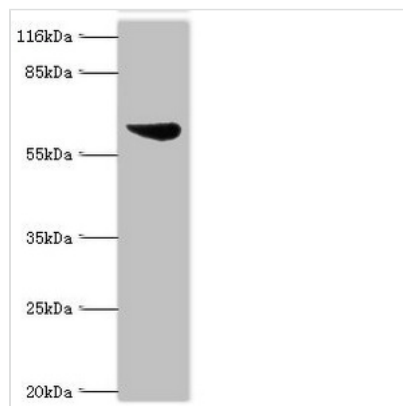




ASH2L Antibody

Product Code	CSB-PA883363LA01HU
Storage	Upon receipt, store at -20°C or -80°C. Avoid repeated freeze.
Uniprot No.	Q9UBL3
Immunogen	Recombinant Human Set1/Ash2 histone methyltransferase complex subunit ASH2 protein (1-534AA)
Raised In	Rabbit
Species Reactivity	Human, Mouse
Tested Applications	ELISA, WB, IHC, IF; Recommended dilution: WB:1:500-1:2000, IHC:1:20-1:200, IF:1:50-1:200
Form	Liquid
Conjugate	Non-conjugated
Storage Buffer	Preservative: 0.03% Proclin 300 Constituents: 50% Glycerol, 0.01M PBS, PH 7.4
Purification Method	>95%, Protein G purified
Isotype	IgG
Clonality	Polyclonal
Alias	Set1/Ash2 histone methyltransferase complex subunit ASH2 (ASH2-like protein), ASH2L, ASH2L1
Immunogen Species	Homo sapiens (Human)
Research Area	Epigenetics and Nuclear Signaling
Target Names	ASH2L

Image



Western blot

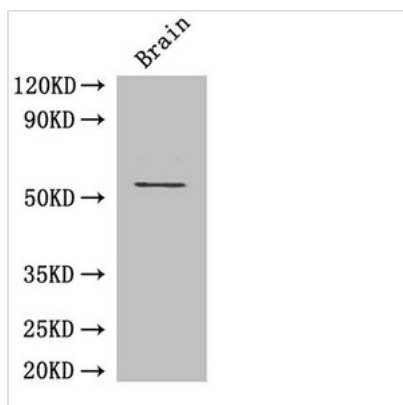
All lanes: Set1/Ash2 histone methyltransferase complex subunit ASH2 antibody at 2μg/ml + K562 whole cell lysate

Secondary

Goat polyclonal to rabbit IgG at 1/10000 dilution

Predicted band size: 69, 57, 61 kDa

Observed band size: 69 kDa



Western Blot

Positive WB detected in: Mouse brain tissue

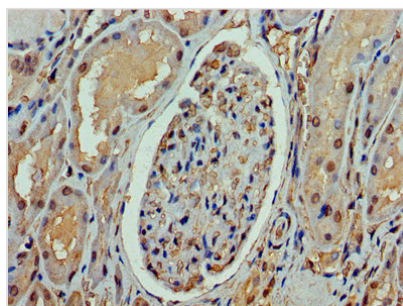
All lanes: ASH2L antibody at 3 μ g/ml

Secondary

Goat polyclonal to rabbit IgG at 1/50000 dilution

Predicted band size: 69, 57, 61 kDa

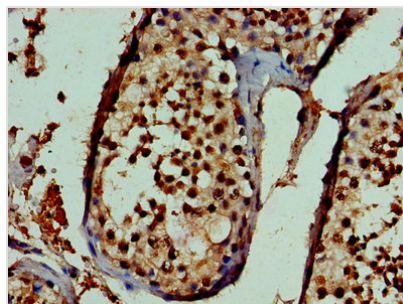
Observed band size: 69 kDa



Immunohistochemistry of paraffin-embedded

human kidney tissue using CSB-

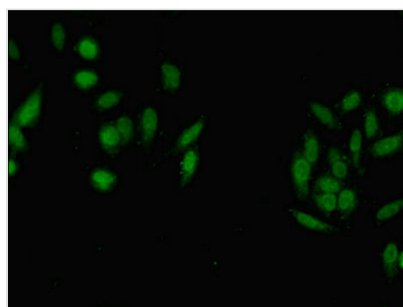
PA883363LA01HU at dilution of 1:100



Immunohistochemistry of paraffin-embedded

human testis tissue using CSB-

PA883363LA01HU at dilution of 1:100



Immunofluorescent analysis of HeLa cells using

CSB-PA883363LA01HU at dilution of 1:100 and

Alexa Fluor 488-conjugated AffiniPure Goat

Anti-Rabbit IgG(H+L)