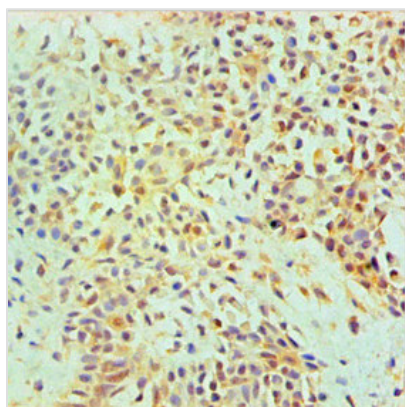




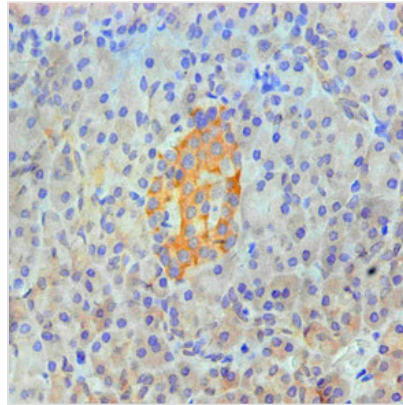
# ANXA2 Monoclonal Antibody

<b>Product Code</b>	CSB-MA0106441A0m
<b>Storage</b>	Upon receipt, store at -20°C or -80°C. Avoid repeated freeze.
<b>Uniprot No.</b>	P07355
<b>Immunogen</b>	Recombinant Human ANXA2 protein
<b>Raised In</b>	mouse
<b>Species Reactivity</b>	Human
<b>Specificity</b>	specific for Human ANXA2 denatured and native forms
<b>Tested Applications</b>	ELISA,WB,IHC;Recommended dilution:WB:1:500-1:5000,IHC:1:50-1:500
<b>Relevance</b>	Calcium-regulated membrane-binding protein whose affinity for calcium is greatly enhanced by anionic phospholipids. It binds two calcium ions with high affinity. May be involved in heat-stress response.
<b>Form</b>	liquid
<b>Conjugate</b>	Non-conjugated
<b>Storage Buffer</b>	Preservative: 0.03% Proclin 300 Constituents: 50% Glycerol, 0.01M PBS, PH 7.4
<b>Purification Method</b>	>95%,protein G purified
<b>Isotype</b>	IgG1
<b>Clonality</b>	monoclonal
<b>Alias</b>	Annexin II,Annexin-2,Calpactin I heavy chain,Chromobindin-8,Lipocortin II,PAP-IV
<b>Product Type</b>	Monoclonal Antibody
<b>Immunogen Species</b>	Homo sapiens (Human)
<b>Target Names</b>	ANXA2
<b>Clone No.</b>	1A1E1

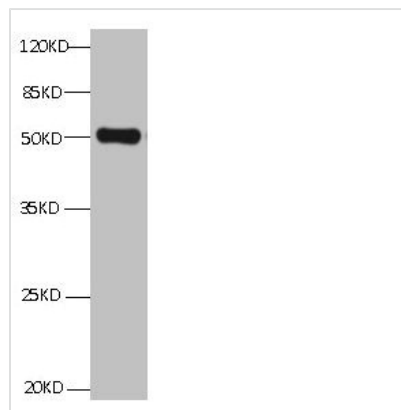
## Image



Immunohistochemical of paraffin-embedded Human Breast tissue using CSB-MA0106441A0m at dilution of 1:200.



Immunohistochemical of paraffin-embedded Human pancreas tissue using CSB-MA0106441A0m at dilution of 1:200.



All Lanes: Mouse anti ANXA2 Monoclonal antibody at 1 $\mu$ g/ml  
lane 1: HepG2 whole cell lysate  
Secondary Goat polyclonal to Mouse IgG at 1/5000 dilution  
Predicted band size: 39,41kd  
Observed band size: 50KD

## Usage

For Research Use Only. Not for use in diagnostic or therapeutic procedures.