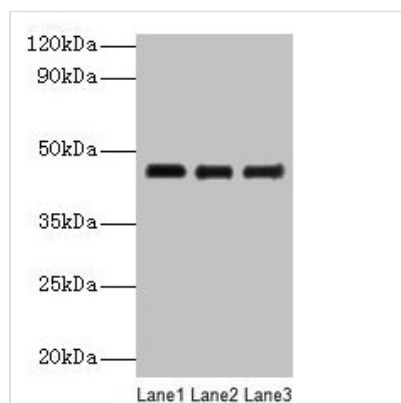




SERPINB14 Antibody

Product Code	CSB-PA004301E01CH
Storage	Upon receipt, store at -20°C or -80°C. Avoid repeated freeze.
Uniprot No.	P01012
Immunogen	Chicken Ovalbumin (Native Protein)
Raised In	Rabbit
Species Reactivity	Chicken
Tested Applications	ELISA, WB; Recommended dilution: WB:1:1000-1:5000
Form	Liquid
Conjugate	Non-conjugated
Storage Buffer	Preservative: 0.03% Proclin 300 Constituents: 50% Glycerol, 0.01M PBS, PH 7.4
Purification Method	Antigen Affinity Purified
Isotype	IgG
Clonality	Polyclonal
Alias	Ovalbumin (Allergen Gal d II) (Egg albumin) (Plakalbumin) (allergen Gal d 2), SERPINB14
Immunogen Species	Chicken
Research Area	Cell Biology
Target Names	SERPINB14

Image



Western blot

All lanes: SERPINB14 antibody at 2µg/ml

Lane 1: Ovalbumin at 1: 4000

Lane 2: Ovalbumin at 1: 8000

Lane 3: Ovalbumin at 1: 16000

Secondary

Goat polyclonal to rabbit IgG at 1/10000 dilution

Predicted band size: 46 kDa

Observed band size: 46 kDa

Usage

For Research Use Only. Not for use in diagnostic or therapeutic procedures.