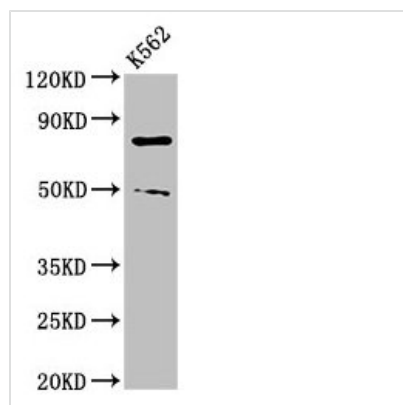




PADI2 Antibody

Product Code	CSB-PA896493YA01HU
Storage	Upon receipt, store at -20°C or -80°C. Avoid repeated freeze.
Uniprot No.	Q9Y2J8
Immunogen	Recombinant Human Protein-arginine deiminase type-2 protein (1-665AA)
Raised In	Rabbit
Species Reactivity	Human
Tested Applications	ELISA, WB, IHC, IF; Recommended dilution: WB:1:500-1:5000, IHC:1:200-1:500, IF:1:50-1:200
Form	Liquid
Conjugate	Non-conjugated
Storage Buffer	Preservative: 0.03% Proclin 300 Constituents: 50% Glycerol, 0.01M PBS, PH 7.4
Purification Method	>95%, Protein G purified
Isotype	IgG
Clonality	Polyclonal
Alias	Protein-arginine deiminase type-2 (EC 3.5.3.15) (PAD-H19) (Peptidylarginine deiminase II) (Protein-arginine deiminase type II), PADI2, KIAA0994 PAD2 PD12
Immunogen Species	Homo sapiens (Human)
Research Area	Neuroscience
Target Names	PADI2

Image



Western Blot

Positive WB detected in: K562 whole cell lysate

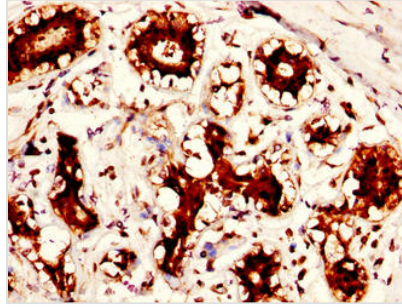
All lanes: PADI2 antibody at 3μg/ml

Secondary

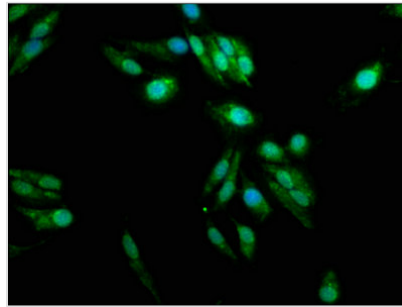
Goat polyclonal to rabbit IgG at 1/50000 dilution

Predicted band size: 76, 50 kDa

Observed band size: 76, 50 kDa



IHC image of CSB-PA896493YA01HU diluted at 1:300 and staining in paraffin-embedded human breast cancer performed on a Leica Bond™ system. After dewaxing and hydration, antigen retrieval was mediated by high pressure in a citrate buffer (pH 6.0). Section was blocked with 10% normal goat serum 30min at RT. Then primary antibody (1% BSA) was incubated at 4°C overnight. The primary is detected by a biotinylated secondary antibody and visualized using an HRP conjugated SP system.



Immunofluorescence staining of Hela cells with CSB-PA896493YA01HU at 1:100, counter-stained with DAPI. The cells were fixed in 4% formaldehyde, permeabilized using 0.2% Triton X-100 and blocked in 10% normal Goat Serum. The cells were then incubated with the antibody overnight at 4°C. The secondary antibody was Alexa Fluor 488-conjugated AffiniPure Goat Anti-Rabbit IgG(H+L).