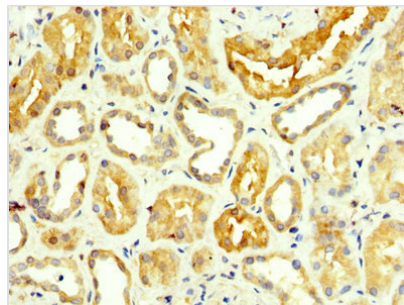




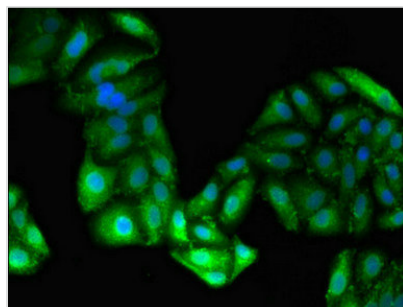
GPT Antibody

Product Code	CSB-PA009864LA01HU
Storage	Upon receipt, store at -20°C or -80°C. Avoid repeated freeze.
Uniprot No.	P24298
Immunogen	Recombinant Human Alanine aminotransferase 1 protein (2-496AA)
Raised In	Rabbit
Species Reactivity	Human, Mouse, Rat
Tested Applications	ELISA, WB, IHC, IF, IP; Recommended dilution: WB:1:500-1:5000, IHC:1:200-1:500, IF:1:50-1:200, IP:1:200-1:2000
Form	Liquid
Conjugate	Non-conjugated
Storage Buffer	Preservative: 0.03% Proclin 300 Constituents: 50% Glycerol, 0.01M PBS, PH 7.4
Purification Method	>95%, Protein G purified
Isotype	IgG
Clonality	Polyclonal
Alias	Alanine aminotransferase 1 (ALT1) (EC 2.6.1.2) (Glutamate pyruvate transaminase 1) (GPT 1) (Glutamic--alanine transaminase 1) (Glutamic--pyruvic transaminase 1), GPT, AAT1 GPT1
Immunogen Species	Homo sapiens (Human)
Research Area	Signal Transduction
Target Names	GPT

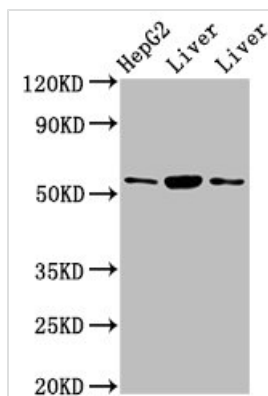
Image



IHC image of CSB-PA009864LA01HU diluted at 1:350 and staining in paraffin-embedded human kidney tissue performed on a Leica BondTM system. After dewaxing and hydration, antigen retrieval was mediated by high pressure in a citrate buffer (pH 6.0). Section was blocked with 10% normal goat serum 30min at RT. Then primary antibody (1% BSA) was incubated at 4°C overnight. The primary is detected by a biotinylated secondary antibody and visualized using an HRP conjugated SP system.



Immunofluorescent analysis of HepG2 cells using CSB-PA009864LA01HU at dilution of 1:100 and Alexa Fluor 488-conjugated AffiniPure Goat Anti-Rabbit IgG(H+L)

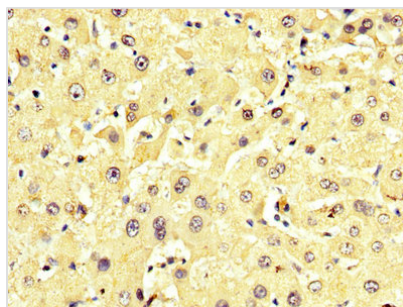


Western Blot

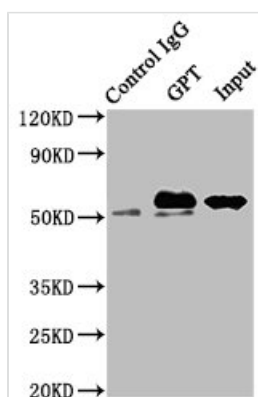
Positive WB detected in: HepG2 whole cell lysate, Rat liver tissue, Mouse liver tissue
All lanes: GPT antibody at 4.5μg/ml

Secondary

Goat polyclonal to rabbit IgG at 1/50000 dilution
Predicted band size: 55 kDa
Observed band size: 55 kDa



IHC image of CSB-PA009864LA01HU diluted at 1:350 and staining in paraffin-embedded human liver tissue performed on a Leica BondTM system. After dewaxing and hydration, antigen retrieval was mediated by high pressure in a citrate buffer (pH 6.0). Section was blocked with 10% normal goat serum 30min at RT. Then primary antibody (1% BSA) was incubated at 4°C overnight. The primary is detected by a biotinylated secondary antibody and visualized using an HRP conjugated SP system.



Immunoprecipitating GPT in Mouse liver tissue

Lane 1: Rabbit control IgG instead of CSB-PA009864LA01HU in Mouse liver tissue. For western blotting, a HRP-conjugated Protein G antibody was used as the secondary antibody (1/2000)

Lane 2: CSB-PA009864LA01HU (8μg) + Mouse liver tissue (500μg)

Lane 3: Mouse liver tissue (10μg)