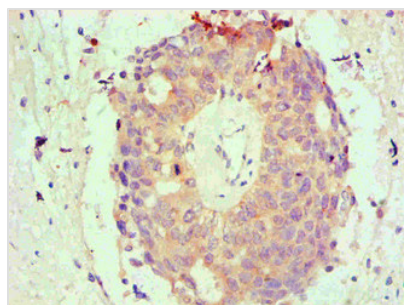




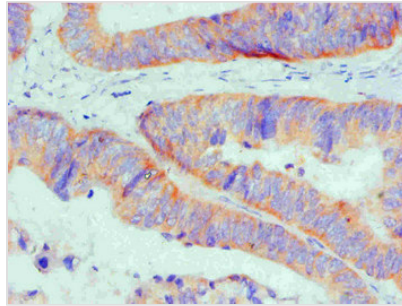
BCL2L1 Monoclonal Antibody

Product Code	CSB-MA0026131A0m
Storage	Upon receipt, store at -20°C or -80°C. Avoid repeated freeze.
Uniprot No.	Q07817
Immunogen	Recombinant Human Bcl-2-like protein 1 protein (1-209AA)
Raised In	mouse
Species Reactivity	Human
Specificity	specific for Human Bcl-2-like protein 1 denatured and native forms
Tested Applications	ELISA,WB,IHC;Recommended dilution:WB:1:500-1:5000,IHC:1:50-1:500
Relevance	Potent inhibitor of cell death. Inhibits activation of caspases. Appears to regulate cell death by blocking the voltage-dependent anion channel (VDAC) by binding to it and preventing the release of the caspase activator, CYC1, from the mitochondrial membrane. Also acts as a regulator of G2 checkpoint and progression to cytokinesis during mitosis.
Form	liquid
Conjugate	Non-conjugated
Storage Buffer	Preservative: 0.03% Proclin 300 Constituents: 50% Glycerol, 0.01M PBS, PH 7.4
Purification Method	>95%,protein G purified
Isotype	IgG1
Clonality	monoclonal
Alias	Bcl2-L-1,Apoptosis regulator Bcl-X,BCL2L1,BCL2L, BCLX
Product Type	Monoclonal Antibody
Immunogen Species	Homo sapiens (Human)
Gene Names	BCL2L1
Clone No.	3D1C1

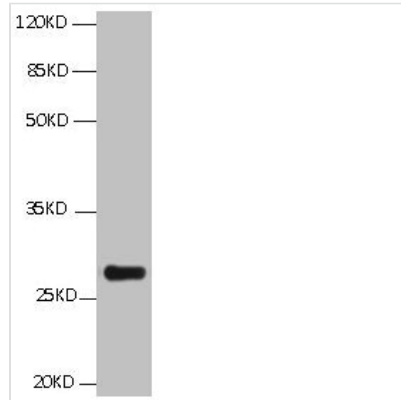
Image



Immunohistochemical of paraffin-embedded Human endometrium tissue using CSB-MA0026131A0m at dilution of 1:200



Immunohistochemical of paraffin-embedded Human Colon cancer tissue using CSB-MA0026131A0m at dilution of 1:200



All Lanes: Mouse anti BCL2L1 Monoclonal antibody at 1 μ g/ml
Lane 1: HepG2 whole cell lysate
Secondary Goat polyclonal to Mouse IgG at 1/5000 dilution
Predicted band size: 26, 27, 19kd
Observed band size: 26KD