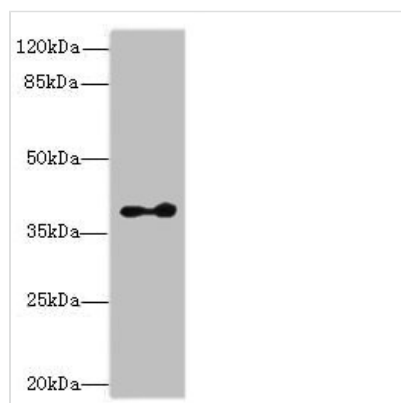




CLVS2 Antibody

Product Code	CSB-PA713118HA01HU
Storage	Upon receipt, store at -20°C or -80°C. Avoid repeated freeze.
Uniprot No.	Q5SYC1
Immunogen	Recombinant Human Clavesin-2 protein (1-327AA)
Raised In	Rabbit
Species Reactivity	Human, Mouse
Tested Applications	ELISA, WB; Recommended dilution: WB:1:1000-1:5000
Form	Liquid
Conjugate	Non-conjugated
Storage Buffer	Preservative: 0.03% Proclin 300 Constituents: 50% Glycerol, 0.01M PBS, PH 7.4
Purification Method	>95%, Protein G purified
Isotype	IgG
Clonality	Polyclonal
Alias	Clavesin-2 (Retinaldehyde-binding protein 1-like 2) (clathrin vesicle-associated Sec14 protein 2), CLVS2, C6orf212 C6orf213 RLBP1L2
Immunogen Species	Homo sapiens (Human)
Research Area	Signal Transduction
Target Names	CLVS2

Image



Western blot
 All lanes: CLVS2 antibody at 16µg/ml + Mouse brain tissue
 Secondary
 Goat polyclonal to rabbit IgG at 1/10000 dilution
 Predicted band size: 38, 22 kDa
 Observed band size: 38 kDa

Usage

For Research Use Only. Not for use in diagnostic or therapeutic procedures.