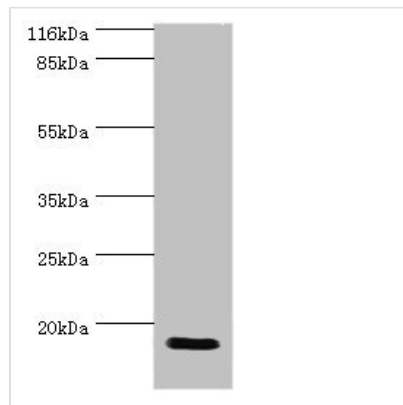




# JPT1 Antibody

<b>Product Code</b>	CSB-PA890732HA01HU
<b>Storage</b>	Upon receipt, store at -20°C or -80°C. Avoid repeated freeze.
<b>Uniprot No.</b>	Q9UK76
<b>Immunogen</b>	Recombinant Human Jupiter microtubule associated homolog 1 protein (2-154AA)
<b>Raised In</b>	Rabbit
<b>Species Reactivity</b>	Human, Rat
<b>Tested Applications</b>	ELISA, WB; Recommended dilution: WB:1:1000-1:5000
<b>Form</b>	Liquid
<b>Conjugate</b>	Non-conjugated
<b>Storage Buffer</b>	Preservative: 0.03% Proclin 300 Constituents: 50% Glycerol, 0.01M PBS, PH 7.4
<b>Purification Method</b>	>95%, Protein G purified
<b>Isotype</b>	IgG
<b>Clonality</b>	Polyclonal
<b>Alias</b>	Jupiter microtubule associated homolog 1 (Androgen-regulated protein 2) (Hematological and neurological expressed 1 protein) [Cleaved into: Jupiter microtubule associated homolog 1, N-terminally processed], JPT1, ARM2 HN1
<b>Immunogen Species</b>	Homo sapiens (Human)
<b>Research Area</b>	Cell Biology
<b>Target Names</b>	JPT1

## Image



### Western blot

All lanes: JPT1 antibody at 2µg/ml + Rat gonad tissue

Secondary

Goat polyclonal to rabbit IgG at 1/10000 dilution

Predicted band size: 17, 20, 12 kDa

Observed band size: 17 kDa

## Usage

For Research Use Only. Not for use in diagnostic or therapeutic procedures.