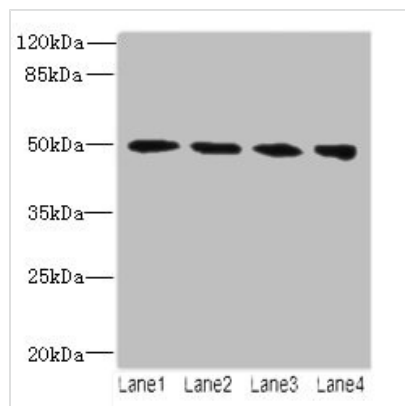




TUBB2A Antibody

Product Code	CSB-PA025320LA01HU
Storage	Upon receipt, store at -20°C or -80°C. Avoid repeated freeze.
Uniprot No.	Q13885
Immunogen	Recombinant Human Tubulin beta-2A chain protein (1-445AA)
Raised In	Rabbit
Species Reactivity	Human
Tested Applications	ELISA, WB; Recommended dilution: WB:1:1000-1:5000
Form	Liquid
Conjugate	Non-conjugated
Storage Buffer	Preservative: 0.03% Proclin 300 Constituents: 50% Glycerol, 0.01M PBS, PH 7.4
Purification Method	>95%, Protein G purified
Isotype	IgG
Clonality	Polyclonal
Alias	Tubulin beta-2A chain (Tubulin beta class IIa), TUBB2A, TUBB2
Immunogen Species	Homo sapiens (Human)
Research Area	Tags & Cell Markers
Target Names	TUBB2A

Image



Western blot

All lanes: TUBB2A antibody at 14µg/ml

Lane 1: MCF-7 whole cell lysate

Lane 2: Hela whole cell lysate

Lane 3: HepG2 whole cell lysate

Lane 4: MDA-MB-231 whole cell lysate

Secondary

Goat polyclonal to rabbit IgG at 1/10000 dilution

Predicted band size: 50 kDa

Observed band size: 50 kDa

Usage

For Research Use Only. Not for use in diagnostic or therapeutic procedures.