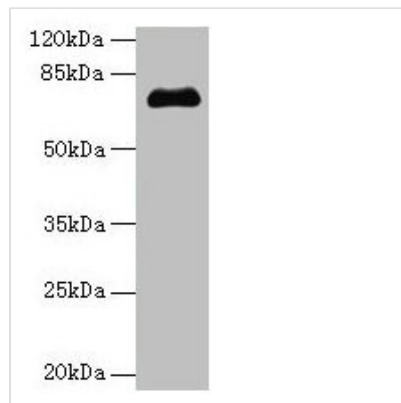




PMEL Antibody

Product Code	CSB-PA021324LA01HU
Storage	Upon receipt, store at -20°C or -80°C. Avoid repeated freeze.
Uniprot No.	P40967
Immunogen	Recombinant Human Melanocyte protein PMEL protein (25-467AA)
Raised In	Rabbit
Species Reactivity	Human
Tested Applications	ELISA, WB, IHC; Recommended dilution: WB:1:1000-1:5000, IHC:1:200-1:500
Form	Liquid
Conjugate	Non-conjugated
Storage Buffer	Preservative: 0.03% Proclin 300 Constituents: 50% Glycerol, 0.01M PBS, PH 7.4
Purification Method	>95%, Protein G purified
Isotype	IgG
Clonality	Polyclonal
Alias	Melanocyte protein PMEL (ME20-M) (ME20M) (Melanocyte protein Pmel 17) (Melanocytes lineage-specific antigen GP100) (Melanoma-associated ME20 antigen) (P1) (P100) (Premelanosome protein) (Silver locus protein homolog) [Cleaved into: M-alpha (95 kDa melanocyte-specific secreted glycoprotein) (P26) (Secreted melanoma-associated ME20 antigen) (ME20-S) (ME20S); M-beta], PMEL, D12S53E PMEL17 SILV
Immunogen Species	Homo sapiens (Human)
Research Area	Tags & Cell Markers
Target Names	PMEL

Image



Western blot

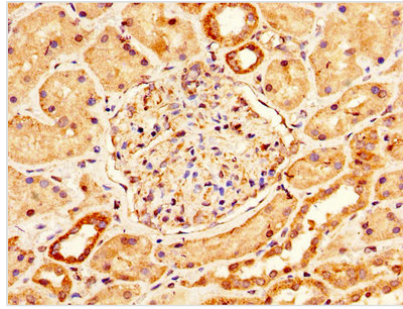
All lanes: PMEL antibody at 14µg/ml + Jurkat whole cell lysate

Secondary

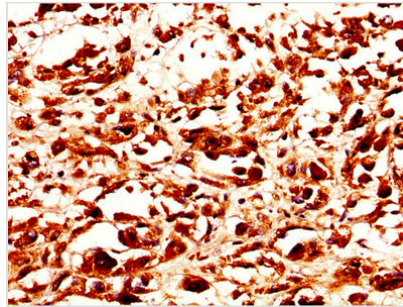
Goat polyclonal to rabbit IgG at 1/10000 dilution

Predicted band size: 71, 61, 67 kDa

Observed band size: 71 kDa



IHC image of CSB-PA021324LA01HU diluted at 1:200 and staining in paraffin-embedded human kidney tissue performed on a Leica Bond™ system. After dewaxing and hydration, antigen retrieval was mediated by high pressure in a citrate buffer (pH 6.0). Section was blocked with 10% normal goat serum 30min at RT. Then primary antibody (1% BSA) was incubated at 4°C overnight. The primary is detected by a biotinylated secondary antibody and visualized using an HRP conjugated SP system.



IHC image of CSB-PA021324LA01HU diluted at 1:200 and staining in paraffin-embedded human melanoma performed on a Leica Bond™ system. After dewaxing and hydration, antigen retrieval was mediated by high pressure in a citrate buffer (pH 6.0). Section was blocked with 10% normal goat serum 30min at RT. Then primary antibody (1% BSA) was incubated at 4°C overnight. The primary is detected by a biotinylated secondary antibody and visualized using an HRP conjugated SP system.

Usage

For Research Use Only. Not for use in diagnostic or therapeutic procedures.