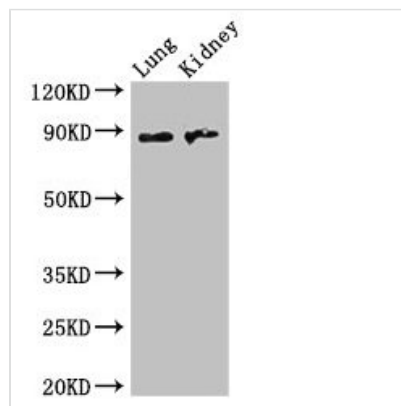




# NAALADL2 Antibody

|                            |  |
|----------------------------|--|
| <b>Product Code</b>        | CSB-PA704507LA01HU   |
| <b>Storage</b>             | Upon receipt, store at -20°C or -80°C. Avoid repeated freeze.  |
| <b>Uniprot No.</b>         | Q58DX5   |
| <b>Immunogen</b>           | Recombinant Human Inactive N-acetylated-alpha-linked acidic dipeptidase-like protein 2 protein (143-795AA) |
| <b>Raised In</b>           | Rabbit   |
| <b>Species Reactivity</b>  | Human, Mouse   |
| <b>Tested Applications</b> | ELISA, WB, IHC, IF; Recommended dilution: WB:1:2000-1:5000, IHC:1:20-1:200, IF:1:50-1:200                  |
| <b>Form</b>                | Liquid   |
| <b>Conjugate</b>           | Non-conjugated   |
| <b>Storage Buffer</b>      | Preservative: 0.03% Proclin 300<br>Constituents: 50% Glycerol, 0.01M PBS, PH 7.4                           |
| <b>Purification Method</b> | >95%, Protein G purified   |
| <b>Isotype</b>             | IgG  |
| <b>Clonality</b>           | Polyclonal   |
| <b>Alias</b>               | Inactive N-acetylated-alpha-linked acidic dipeptidase-like protein 2 (NAALADase L2), NAALADL2              |
| <b>Immunogen Species</b>   | Homo sapiens (Human)   |
| <b>Research Area</b>       | Cell Biology   |
| <b>Target Names</b>        | NAALADL2   |

## Image



### Western Blot

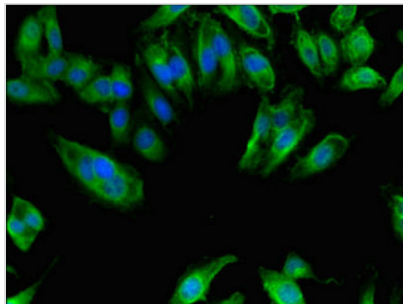
Positive WB detected in: Mouse lung tissue,  
Mouse kidney tissue

All lanes: NAALADL2 antibody at 3.5µg/ml  
Secondary

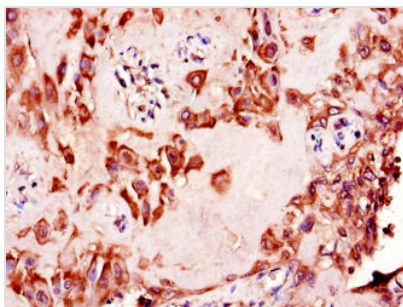
Goat polyclonal to rabbit IgG at 1/50000 dilution

Predicted band size: 89, 37 kDa

Observed band size: 89 kDa



Immunofluorescent analysis of HeLa cells using CSB-PA704507LA01HU at dilution of 1:100 and Alexa Fluor 488-conjugated AffiniPure Goat Anti-Rabbit IgG(H+L)



Immunohistochemistry of paraffin-embedded human placenta tissue using CSB-PA704507LA01HU at dilution of 1:100

## Usage

For Research Use Only. Not for use in diagnostic or therapeutic procedures.