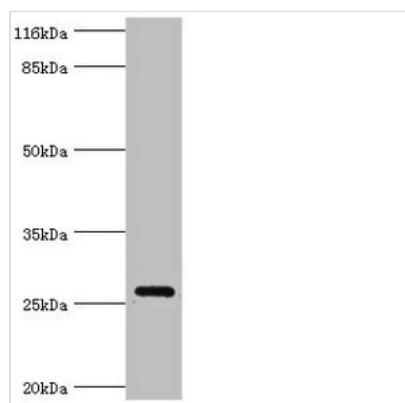




OFCC1 Antibody

Product Code	CSB-PA809031LA01HU
Storage	Upon receipt, store at -20°C or -80°C. Avoid repeated freeze.
Uniprot No.	Q8IZS5
Immunogen	Recombinant Human Orofacial cleft 1 candidate gene 1 protein (3-231AA)
Raised In	Rabbit
Species Reactivity	Human, Mouse
Tested Applications	ELISA, WB; Recommended dilution: WB:1:1000-1:5000
Form	Liquid
Conjugate	Non-conjugated
Storage Buffer	Preservative: 0.03% Proclin 300 Constituents: 50% Glycerol, 0.01M PBS, PH 7.4
Purification Method	>95%, Protein G purified
Isotype	IgG
Clonality	Polyclonal
Alias	Orofacial cleft 1 candidate gene 1 protein (Orofacial clefting chromosomal breakpoint region candidate 1 protein), OFCC1, MRDS1
Immunogen Species	Homo sapiens (Human)
Research Area	Others
Target Names	OFCC1

Image



Western blot
 All lanes: OFCC1 antibody at 2µg/ml + Mouse gonadal tissue
 Secondary
 Goat polyclonal to rabbit IgG at 1/10000 dilution
 Predicted band size: 27, 32, 21, 14, 16 kDa
 Observed band size: 27 kDa

Usage

For Research Use Only. Not for use in diagnostic or therapeutic procedures.