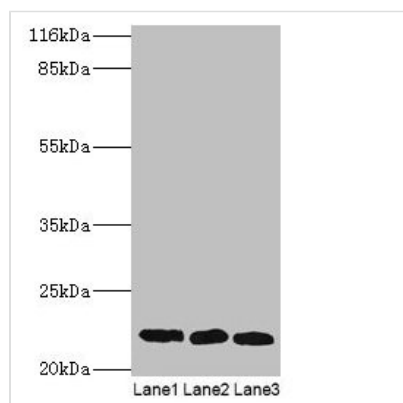




SSSCA1 Antibody

Product Code	CSB-PA022722HA01HU
Storage	Upon receipt, store at -20°C or -80°C. Avoid repeated freeze.
Uniprot No.	O60232
Immunogen	Recombinant Human Sjogren syndrome/scleroderma autoantigen 1 protein (2-199AA)
Raised In	Rabbit
Species Reactivity	Human
Tested Applications	ELISA, WB, IHC; Recommended dilution: WB:1:500-1:5000, IHC:1:20-1:200
Form	Liquid
Conjugate	Non-conjugated
Storage Buffer	Preservative: 0.03% Proclin 300 Constituents: 50% Glycerol, 0.01M PBS, PH 7.4
Purification Method	>95%, Protein G purified
Isotype	IgG
Clonality	Polyclonal
Alias	Sjogren syndrome/scleroderma autoantigen 1 (Autoantigen p27), SSSCA1
Immunogen Species	Homo sapiens (Human)
Research Area	Immunology
Target Names	SSSCA1

Image



Western blot

All lanes: SSSCA1 antibody at 2µg/ml

Lane 1: A549 whole cell lysate

Lane 2: MCF-7 whole cell lysate

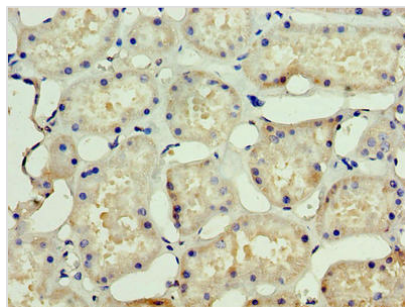
Lane 3: 293T whole cell lysate

Secondary

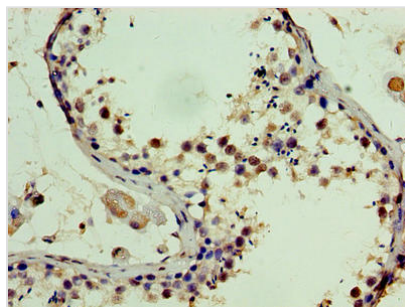
Goat polyclonal to rabbit IgG at 1/10000 dilution

Predicted band size: 22 kDa

Observed band size: 22 kDa



Immunohistochemistry of paraffin-embedded human kidney tissue using CSB-PA022722HA01HU at dilution of 1:100



Immunohistochemistry of paraffin-embedded human testis tissue using CSB-PA022722HA01HU at dilution of 1:100

Usage

For Research Use Only. Not for use in diagnostic or therapeutic procedures.