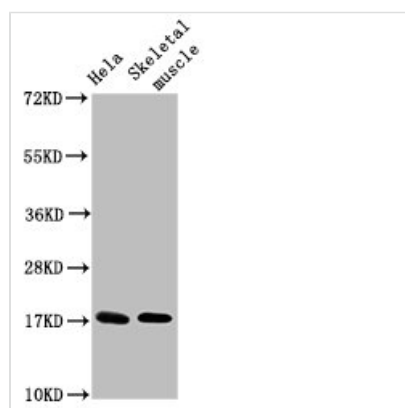




UBE2D3 Antibody

Product Code	CSB-PA025445HA01HU
Storage	Upon receipt, store at -20°C or -80°C. Avoid repeated freeze.
Uniprot No.	P61077
Immunogen	Recombinant Human Ubiquitin-conjugating enzyme E2 D3 protein (1-147AA)
Raised In	Rabbit
Species Reactivity	Human, Rat
Tested Applications	ELISA, WB; Recommended dilution: WB:1:500-1:5000
Form	Liquid
Conjugate	Non-conjugated
Storage Buffer	Preservative: 0.03% Proclin 300 Constituents: 50% Glycerol, 0.01M PBS, PH 7.4
Purification Method	>95%, Protein G purified
Isotype	IgG
Clonality	Polyclonal
Alias	Ubiquitin-conjugating enzyme E2 D3 (EC 2.3.2.23) ((E3-independent) E2 ubiquitin-conjugating enzyme D3) (EC 2.3.2.24) (E2 ubiquitin-conjugating enzyme D3) (Ubiquitin carrier protein D3) (Ubiquitin-conjugating enzyme E2(17)KB 3) (Ubiquitin-conjugating enzyme E2-17 kDa 3) (Ubiquitin-protein ligase D3), UBE2D3, UBC5C UBCH5C
Immunogen Species	Homo sapiens (Human)
Research Area	Epigenetics and Nuclear Signaling
Target Names	UBE2D3

Image



Western Blot

Positive WB detected in: HeLa whole cell lysate, Rat skeletal muscle tissue

All lanes: UBE2D3 antibody at 4.8µg/ml

Secondary

Goat polyclonal to rabbit IgG at 1/50000 dilution

Predicted band size: 17 kDa

Observed band size: 17 kDa

Usage

For Research Use Only. Not for use in diagnostic or therapeutic procedures.