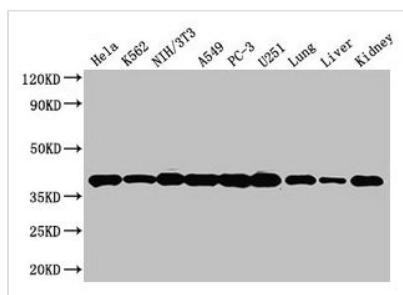




# ANXA2 Antibody

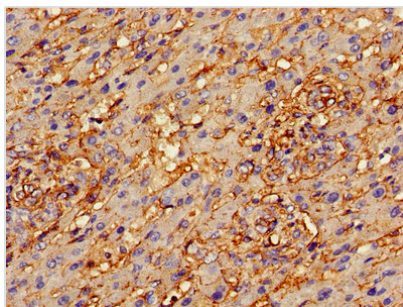
<b>Product Code</b>	CSB-PA001840HA01HU
<b>Storage</b>	Upon receipt, store at -20°C or -80°C. Avoid repeated freeze.
<b>Uniprot No.</b>	P07355
<b>Immunogen</b>	Recombinant Human Annexin A2 protein (2-339AA)
<b>Raised In</b>	Rabbit
<b>Species Reactivity</b>	Human, Mouse
<b>Tested Applications</b>	ELISA, WB, IHC, IF, IP; Recommended dilution: WB:1:500-1:5000, IHC:1:20-1:200, IF:1:50-1:200, IP:1:200-1:2000
<b>Form</b>	Liquid
<b>Conjugate</b>	Non-conjugated
<b>Storage Buffer</b>	Preservative: 0.03% Proclin 300 Constituents: 50% Glycerol, 0.01M PBS, PH 7.4
<b>Purification Method</b>	>95%, Protein G purified
<b>Isotype</b>	IgG
<b>Clonality</b>	Polyclonal
<b>Alias</b>	Annexin A2 (Annexin II) (Annexin-2) (Calpactin I heavy chain) (Calpactin-1 heavy chain) (Chromobindin-8) (Lipocortin II) (Placental anticoagulant protein IV) (PAP-IV) (Protein I) (p36), ANXA2, ANX2 ANX2L4 CAL1H LPC2D
<b>Immunogen Species</b>	Homo sapiens (Human)
<b>Research Area</b>	Signal Transduction
<b>Target Names</b>	ANXA2

## Image

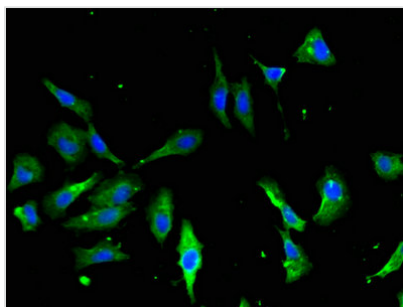


### Western Blot

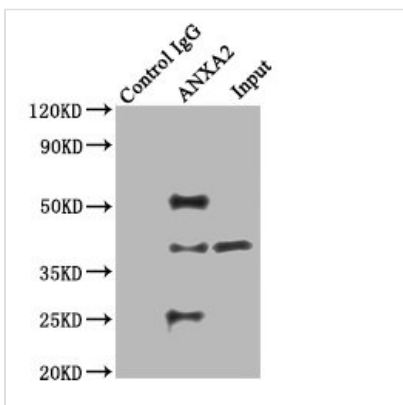
Positive WB detected in: HeLa whole cell lysate, K562 whole cell lysate, NIH/3T3 whole cell lysate, A549 whole cell lysate, PC-3 whole cell lysate, U251 whole cell lysate, Mouse lung tissue, Mouse liver tissue, Mouse kidney tissue  
All lanes: ANXA2 antibody at 3µg/ml  
Secondary  
Goat polyclonal to rabbit IgG at 1/50000 dilution  
Predicted band size: 39, 41 kDa  
Observed band size: 39 kDa



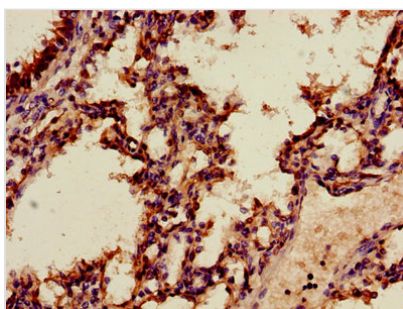
Immunohistochemistry of paraffin-embedded human liver cancer using CSB-PA001840HA01HU at dilution of 1:100



Immunofluorescent analysis of HeLa cells using CSB-PA001840HA01HU at dilution of 1:100 and Alexa Fluor 488-conjugated AffiniPure Goat Anti-Rabbit IgG(H+L)



Immunoprecipitating ANXA2 in HeLa whole cell lysate  
 Lane 1: Rabbit control IgG instead of CSB-PA001840HA01HU in HeLa whole cell lysate. For western blotting, a HRP-conjugated Protein G antibody was used as the secondary antibody (1/2000)  
 Lane 2: CSB-PA001840HA01HU (8µg) + HeLa whole cell lysate (500µg)  
 Lane 3: HeLa whole cell lysate (20µg)



Immunohistochemistry of paraffin-embedded human lung tissue using CSB-PA001840HA01HU at dilution of 1:100

**Usage**

For Research Use Only. Not for use in diagnostic or therapeutic procedures.