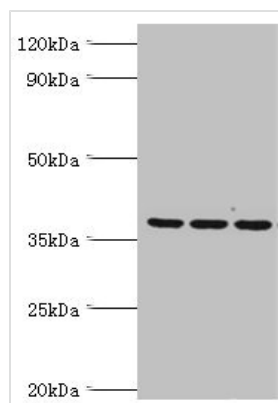




MRPL1 Antibody

Product Code	CSB-PA874841HA01HU
Storage	Upon receipt, store at -20°C or -80°C. Avoid repeated freeze.
Uniprot No.	Q9BYD6
Immunogen	Recombinant Human 39S ribosomal protein L1, mitochondrial protein (51-324AA)
Raised In	Rabbit
Species Reactivity	Human
Tested Applications	ELISA, WB, IHC; Recommended dilution: WB:1:1000-1:5000, IHC:1:20-1:200
Form	Liquid
Conjugate	Non-conjugated
Storage Buffer	Preservative: 0.03% Proclin 300 Constituents: 50% Glycerol, 0.01M PBS, PH 7.4
Purification Method	>95%, Protein G purified
Isotype	IgG
Clonality	Polyclonal
Alias	39S ribosomal protein L1, mitochondrial (L1mt) (MRP-L1) (Mitochondrial large ribosomal subunit protein uL1m), MRPL1
Immunogen Species	Homo sapiens (Human)
Research Area	Tags & Cell Markers
Target Names	MRPL1

Image



Western blot

All lanes: 39S ribosomal protein L1, mitochondrial antibody at 2μg/ml

Lane 1: Hela whole cell lysate

Lane 2: K562 whole cell lysate

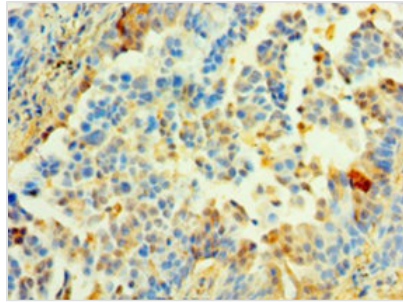
Lane 3: HepG2 whole cell lysate

Secondary

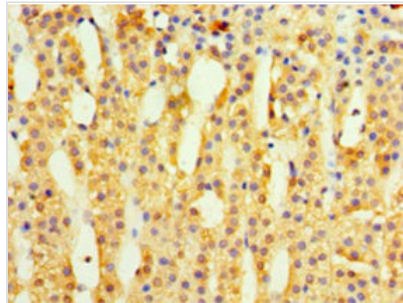
Goat polyclonal to rabbit IgG at 1/10000 dilution

Predicted band size: 39 kDa

Observed band size: 39 kDa



Immunohistochemistry of paraffin-embedded human lung cancer using CSB-PA874841HA01HU at dilution of 1:100



Immunohistochemistry of paraffin-embedded human adrenal gland tissue using CSB-PA874841HA01HU at dilution of 1:100