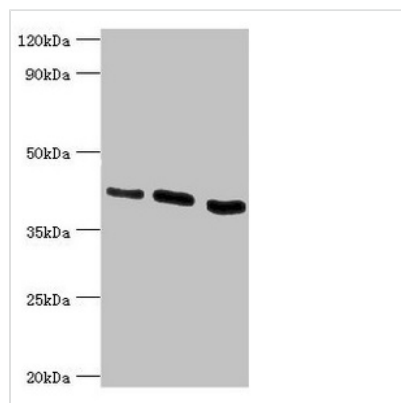




HTRA2 Antibody

Product Code	CSB-PA010902ESR2HU
Storage	Upon receipt, store at -20°C or -80°C. Avoid repeated freeze.
Uniprot No.	O43464
Immunogen	Recombinant Human Serine protease HTRA2, mitochondrial protein (334-458AA)
Raised In	Rabbit
Species Reactivity	Human
Tested Applications	ELISA, WB, IHC; Recommended dilution: WB:1:500-1:2000, IHC:1:20-1:200
Form	Liquid
Conjugate	Non-conjugated
Storage Buffer	PBS with 0.02% sodium azide, 50% glycerol, pH7.3.
Purification Method	Antigen Affinity Purified
Isotype	IgG
Clonality	Polyclonal
Alias	Serine protease HTRA2, mitochondrial (EC 3.4.21.108) (High temperature requirement protein A2) (HtrA2) (Omi stress-regulated endoprotease) (Serine protease 25) (Serine proteinase OMI), HTRA2, OMI PRSS25
Immunogen Species	Homo sapiens (Human)
Research Area	Neuroscience
Target Names	HTRA2

Image



Western blot

All lanes: HTRA2 antibody at 0.9µg/ml

Lane 1: HeLa whole cell lysate

Lane 2: U937 whole cell lysate

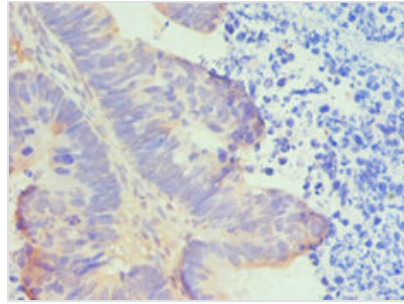
Lane 3: 293T whole cell lysate

Secondary

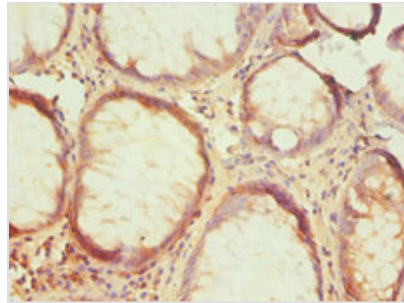
Goat polyclonal to rabbit IgG at 1/10000 dilution

Predicted band size: 49, 39, 47, 40 kDa

Observed band size: 39 kDa



Immunohistochemistry of paraffin-embedded human ovarian cancer using CSB-PA010902ESR2HU at dilution of 1:100



Immunohistochemistry of paraffin-embedded human colon cancer using CSB-PA010902ESR2HU at dilution of 1:100

Usage

For Research Use Only. Not for use in diagnostic or therapeutic procedures.