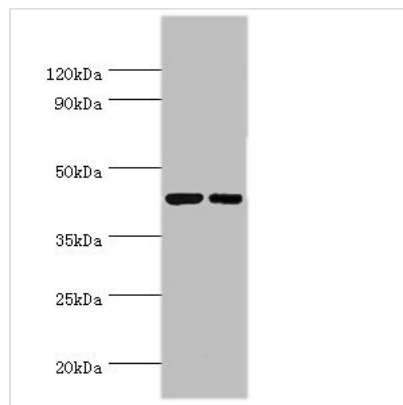




# CREB3 Antibody

<b>Product Code</b>	CSB-PA005948ESR1HU
<b>Storage</b>	Upon receipt, store at -20°C or -80°C. Avoid repeated freeze.
<b>Uniprot No.</b>	O43889
<b>Immunogen</b>	Recombinant Human Cyclic AMP-responsive element-binding protein 3 protein (1-230AA)
<b>Raised In</b>	Rabbit
<b>Species Reactivity</b>	Human
<b>Tested Applications</b>	ELISA, WB, IHC; Recommended dilution: WB:1:500-1:1000, IHC:1:20-200
<b>Form</b>	Liquid
<b>Conjugate</b>	Non-conjugated
<b>Storage Buffer</b>	PBS with 0.02% sodium azide, 50% glycerol, pH7.3.
<b>Purification Method</b>	Antigen Affinity purified
<b>Isotype</b>	IgG
<b>Clonality</b>	Polyclonal
<b>Alias</b>	Cyclic AMP-responsive element-binding protein 3 (CREB-3) (cAMP-responsive element-binding protein 3) (Leucine zipper protein) (Luman) (Transcription factor LZIP-alpha) [Cleaved into: Processed cyclic AMP-responsive element-binding protein 3 (N-terminal Luman) (Transcriptionally active form)], CREB3, LZIP
<b>Immunogen Species</b>	Homo sapiens (Human)
<b>Research Area</b>	Microbiology
<b>Target Names</b>	CREB3

## Image



### Western blot

All lanes: Cyclic AMP-responsive element-binding protein 3 antibody at 6µg/ml

Lane 1: Jurkat whole cell lysate

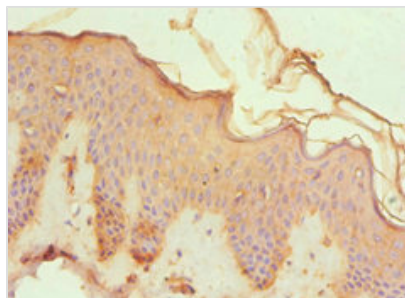
Lane 2: HepG2 whole cell lysate

Secondary

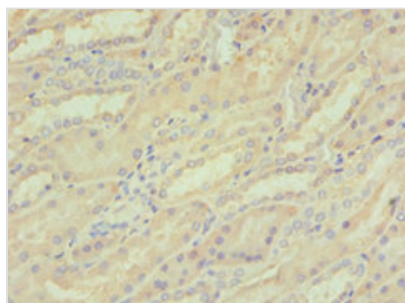
Goat polyclonal to rabbit IgG at 1/10000 dilution

Predicted band size: 44, 42, 40 kDa

Observed band size: 44 kDa



Immunohistochemistry of paraffin-embedded human skin tissue using CSB-PA005948ESR1HU at dilution of 1:100



Immunohistochemistry of paraffin-embedded human kidney tissue using CSB-PA005948ESR1HU at dilution of 1:100

## Usage

For Research Use Only. Not for use in diagnostic or therapeutic procedures.