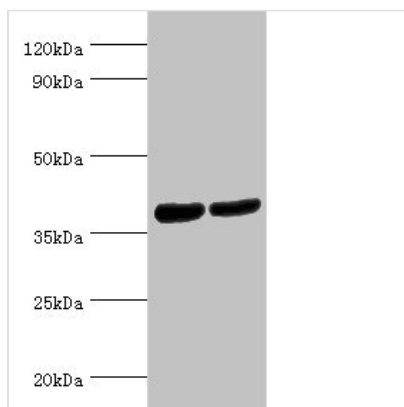




ATP6AP2 Antibody

Product Code	CSB-PA002384ESR2HU
Storage	Upon receipt, store at -20°C or -80°C. Avoid repeated freeze.
Uniprot No.	O75787
Immunogen	Recombinant Human Renin receptor protein (251-350AA)
Raised In	Rabbit
Species Reactivity	Human, Mouse
Tested Applications	ELISA, WB, IHC; Recommended dilution: WB:1:500-1:5000, IHC:1:20-1:200
Form	Liquid
Conjugate	Non-conjugated
Storage Buffer	PBS with 0.02% sodium azide, 50% glycerol, pH7.3.
Purification Method	Antigen Affinity Purified
Isotype	IgG
Clonality	Polyclonal
Alias	Renin receptor (ATPase H(+)-transporting lysosomal accessory protein 2) (ATPase H(+)-transporting lysosomal-interacting protein 2) (ER-localized type I transmembrane adaptor) (Embryonic liver differentiation factor 10) (N14F) (Renin/prorenin receptor) (Vacuolar ATP synthase membrane sector-associated protein M8-9) (ATP6M8-9) (V-ATPase M8.9 subunit), ATP6AP2, ATP6IP2, CAPER, ELDF10
Immunogen Species	Homo sapiens (Human)
Research Area	Signal Transduction
Target Names	ATP6AP2

Image



Western blot

All lanes: Renin receptor antibody at 2µg/ml

Lane 1: HeLa whole cell lysate

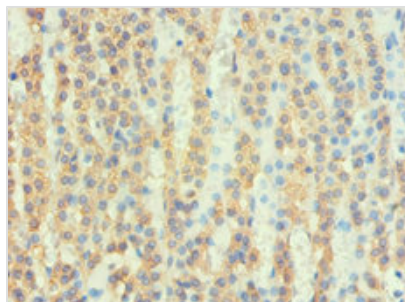
Lane 2: Mouse heart tissue

Secondary

Goat polyclonal to rabbit IgG at 1/10000 dilution

Predicted band size: 40, 36 kDa

Observed band size: 40 kDa



Immunohistochemistry of paraffin-embedded human adrenal gland tissue using CSB-PA002384ESR2HU at dilution of 1:100

Usage

For Research Use Only. Not for use in diagnostic or therapeutic procedures.