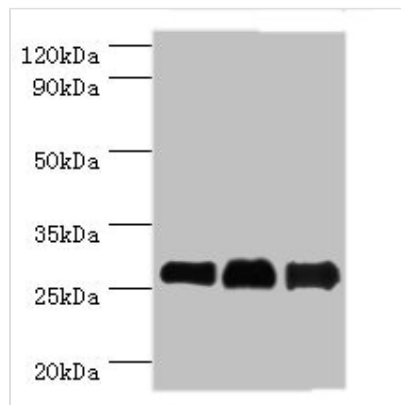




# BCL10 Antibody

<b>Product Code</b>	CSB-PA002608ESR2HU
<b>Storage</b>	Upon receipt, store at -20°C or -80°C. Avoid repeated freeze.
<b>Uniprot No.</b>	O95999
<b>Immunogen</b>	Recombinant Human B-cell lymphoma/leukemia 10 protein (1-233AA)
<b>Raised In</b>	Rabbit
<b>Species Reactivity</b>	Human, Mouse
<b>Tested Applications</b>	ELISA, WB, IHC; Recommended dilution: WB:1:500-1:2000, IHC:1:20-1:200
<b>Form</b>	Liquid
<b>Conjugate</b>	Non-conjugated
<b>Storage Buffer</b>	PBS with 0.02% sodium azide, 50% glycerol, pH7.3.
<b>Purification Method</b>	Antigen Affinity purified
<b>Isotype</b>	IgG
<b>Clonality</b>	Polyclonal
<b>Alias</b>	B-cell lymphoma/leukemia 10 (B-cell CLL/lymphoma 10) (Bcl-10) (CARD-containing molecule enhancing NF-kappa-B) (CARD-like apoptotic protein) (hCLAP) (CED-3/ICH-1 prodomain homologous E10-like regulator) (CIPER) (Cellular homolog of vCARMEN) (cCARMEN) (Cellular-E10) (c-E10) (Mammalian CARD-containing adapter molecule E10) (mE10), BCL10, CIPER CLAP
<b>Immunogen Species</b>	Homo sapiens (Human)
<b>Research Area</b>	Cell Biology
<b>Target Names</b>	BCL10

## Image



### Western blot

All lanes: B-cell lymphoma/leukemia 10 antibody at 9µg/ml

Lane 1: Mouse gonad tissue

Lane 2: MCF-7 whole cell lysate

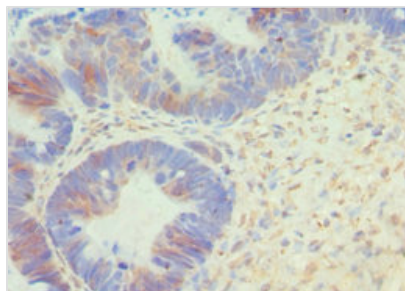
Lane 3: NIH/3T3 whole cell lysate

Secondary

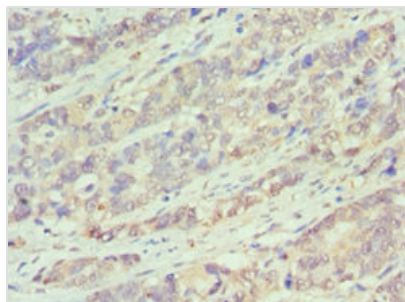
Goat polyclonal to rabbit IgG at 1/10000 dilution

Predicted band size: 26 kDa

Observed band size: 26 kDa



Immunohistochemistry of paraffin-embedded human ovarian cancer using CSB-PA002608ESR2HU at dilution of 1:100



Immunohistochemistry of paraffin-embedded human endometrial cancer using CSB-PA002608ESR2HU at dilution of 1:100

## Usage

For Research Use Only. Not for use in diagnostic or therapeutic procedures.