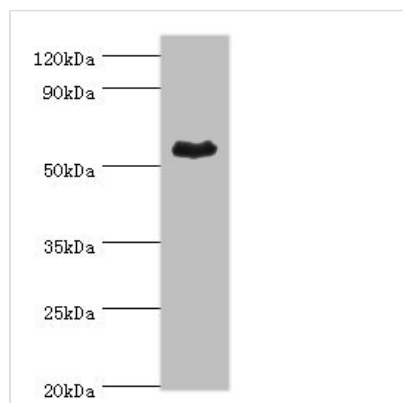




ALDH1A1 Antibody

Product Code	CSB-PA001565ESR1HU
Storage	Upon receipt, store at -20°C or -80°C. Avoid repeated freeze.
Uniprot No.	P00352
Immunogen	Recombinant Human Retinal dehydrogenase 1 protein (202-501AA)
Raised In	Rabbit
Species Reactivity	Human, Mouse
Tested Applications	ELISA, WB, IHC; Recommended dilution: WB:1:500-1:2000, IHC:1:20-1:200
Form	Liquid
Conjugate	Non-conjugated
Storage Buffer	PBS with 0.02% sodium azide, 50% glycerol, pH7.3.
Purification Method	Antigen Affinity Purified
Isotype	IgG
Clonality	Polyclonal
Alias	Retinal dehydrogenase 1 (RALDH 1) (RaIDH1) (EC 1.2.1.-) (EC 1.2.1.36) (ALDH-E1) (ALHDII) (Aldehyde dehydrogenase family 1 member A1) (Aldehyde dehydrogenase, cytosolic), ALDH1A1, ALDC ALDH1 PUMB1
Immunogen Species	Homo sapiens (Human)
Research Area	Neuroscience
Target Names	ALDH1A1

Image



Western blot

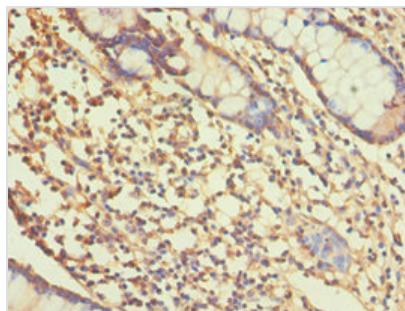
All lanes: Retinal dehydrogenase 1 antibody at 4µg/ml + Mouse liver tissue

Secondary

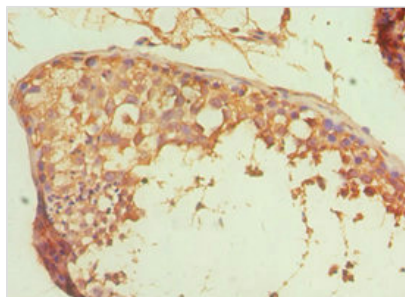
Goat polyclonal to rabbit IgG at 1/10000 dilution

Predicted band size: 55 kDa

Observed band size: 55 kDa



Immunohistochemistry of paraffin-embedded human small intestine tissue using CSB-PA001565ESR1HU at dilution of 1:100



Immunohistochemistry of paraffin-embedded human testis tissue using CSB-PA001565ESR1HU at dilution of 1:100