



SLC2A1 Antibody

Product Code	CSB-PA021546ESR2HU
Storage	Upon receipt, store at -20°C or -80°C. Avoid repeated freeze.
Uniprot No.	P11166
Immunogen	Recombinant Human Solute carrier family 2, facilitated glucose transporter member 1 protein (210-310AA)
Raised In	Rabbit
Species Reactivity	Human, Mouse
Tested Applications	ELISA, WB, IHC; Recommended dilution: WB:1:500-1:5000, IHC:1:20-1:200
Form	Liquid
Conjugate	Non-conjugated
Storage Buffer	PBS with 0.02% sodium azide, 50% glycerol, pH7.3.
Purification Method	Antigen Affinity Purified
Isotype	IgG
Clonality	Polyclonal
Alias	Solute carrier family 2, facilitated glucose transporter member 1 (Glucose transporter type 1, erythrocyte/brain) (GLUT-1) (HepG2 glucose transporter), SLC2A1, GLUT1
Immunogen Species	Homo sapiens (Human)
Research Area	Signal Transduction
Target Names	SLC2A1

Image



Western blot

All lanes: SLC2A1 antibody at 6µg/ml

Lane 1: NIH/3T3 whole cell lysate

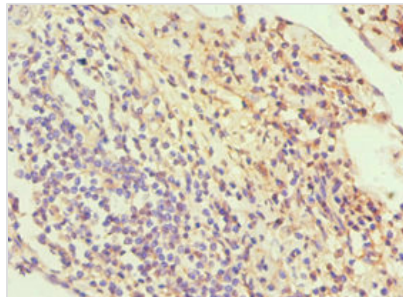
Lane 2: Hela whole cell lysate

Secondary

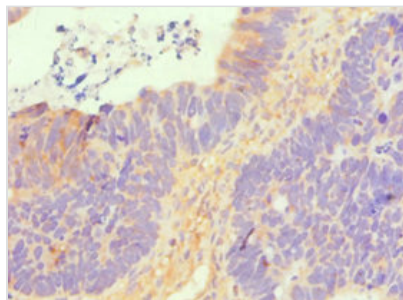
Goat polyclonal to rabbit IgG at 1/10000 dilution

Predicted band size: 54 kDa

Observed band size: 54 kDa



Immunohistochemistry of paraffin-embedded human cervical cancer using CSB-PA021546ESR2HU at dilution of 1:100



Immunohistochemistry of paraffin-embedded human ovarian cancer using CSB-PA021546ESR2HU at dilution of 1:100